

Contents

Title	Author	Page
Articles		
Cambridge Community Arts		24
Cambridge Open Studios	Jo Riches	6
Donkey Event in Reach	Joss Goodchild	21
Job Opportunity		12
Reach Village Annual Parish Meeting		14
Swaffham Prior School		21
Anglesey Abbey		-
Bottisham and Burwell Photographic Club	Elliot Needham	12
Bottisham Village College Adult Learning		7
Burwell Museum and Windmill	Alison Giles	14
Burwell Museum Coach Trips		12
Bus Timetable		35
Cambridgeshire Fire and Rescue		-
Church		
Church Refurbishment Update	Pat Chalmers	22
Church Services and Events		23
Letter from the Vicarage	Eleanor Williams	22
Contact Information		36
Crossword	Courtesy of the Guardian	-
Diary Dates		34
Dyke's End	<i>See our Adverts Section</i>	-
Events Team	Debbie Quilter	5
Food Focus	Catherine Gibson	20
Getting to Know You	Joss Goodchild	7
Neighbourhood Plan	Nick Acklam	3
Neighbourhood Watch	Ken Evans	-
Out and About	Joss Goodchild	9
Parish Council		
Know your District Councillors		24
Know Your Parish Council		24
Meeting Minutes		27
Rosanna's Ramblings	Rosanna Moseley Gore	4
Sport and Recreation		
Cricket Report	Ross Clark	25
Reach Riders	Sue Cameron	25
Tennis Court	See page 5 and Back Cover	5 and BC
Tales from a Reach Garden	Danuta Gibson	19
Then and Now	Chris Patterson	36
Village Update	Alex de Giorgio-Miller	3
Wicken Fen	Isabel Sedgewick	14

From the Editor

As I write, the sun is shining, its very warm and life is lovely. Let's hope it stays that way and that Boris's words on the 21st of June will, with due and proper assessment of risks, release us from the vast majority of the mandatory restrictions currently in place.



In the village, it is pleasing to see that we now have a duly elected Chairman of the Parish Council in Charlotte Cane and that Nick Acklam has been elected as Vice Chair – congratulations go to both of you. However, there still remains a vacancy for a councillor and has been for some time and it would be great to get this filled. Its not an onerous job and can be very fulfilling and there is no need to have been living in the village for a long period, just thoughtful common sense is the main criteria, in my opinion.

The Annual Parish Meeting (Zoom) came and went and the Draft Minutes can be found on page 14 of this issue. These meetings are not Parish COUNCIL meetings, they are Parish meetings for villagers where a chair is elected on the night and it gives everyone a chance to comment on the last year and what needs to be done going forward. Hopefully next year's will be better attended, they are an excellent opportunity to make inputs.

I've mentioned before how important our advertisers are to us and I am delighted to welcome back the **Red Lion pub, Deano and Emma**, who supported us last year and now that they are able to open again, are doing so this year.

We also have a new advertiser in **Trish Harrington** and her business, **Honeysuckle and Hawthorn**. She has recently started her own small business making handmade lampshades and other hand sewn items together with offering other home furnishings and bespoke. Trish was born in Swaffham Bulbeck, also lived in Burwell for over 20 years and had relatives that were born/lived in Reach for many years. She is currently showcasing some of her items at Tina's in Burwell so why not go along and have a look.

And yesterday I had a game of table tennis on the table in the playing field, with my grandson. It was excellent and it was lovely to see so many people taking advantage of the playground and the tennis court.

Last but by no means least, please have a look at page 5 where there's an update on our tennis court and its future – I need your help here please.

David Parr
davidmparr@btinternet.com 07887 563720

About the Magazine

The purpose of *Within Reach* is to serve the whole village by circulating information and interesting articles free to every household. Additional copies are available at a charge of £2.50. Issues are published bi-monthly covering the months of Feb/Mar, Apr/May, June/July, Aug/Sept, Oct/Nov and Dec/Jan.

Copies of *Within Reach* magazine and its predecessor *Out of Reach* can be found on the village website www.reach-village.co.uk. The next copy date is 20th July 2021. This magazine (which is fully funded from advertising) is approved and printed by Reach Parish Council.

The Team

Editor	David Parr
Distribution	Freda Lloyd, Claire Halpin-McDonald and Grahame Radford
Photographer	Rosanna Moseley Gore
24Acres	David Thomas
Church	Eleanor Williams
Cookery	Catherine Gibson
Cricket	Ross Clark
Events Team	Debbie Quilter
Gardening	Danuta Gibson
Getting to Know You	Joss Goodchild
IT Advice	David McMillan
Metal Detecting	Luke Mercer
Neighbourhood Watch	Kevin Evans
Reach Riders Group	Sue Cameron
Rosanna's Ramblings	Rosanna Moseley Gore
Snakehall Farm	Liz Pitt
Then and Now	Chris Patterson
Village Matters	Alex de Giorgio-Miller
Wicken Fen	Julia Hammond
Wildlife	Joss Goodchild

Village Update

When I sat down to write last issue's article, I talked about the 'first tentative signs of spring'. As I sit down now to write there is a hailstorm battering the windows! Fingers crossed we have sunnier times ahead - we are feeling very cross that our playground visits keep being re-arranged due to the crazy weather! We do, however, always appreciate a good puddle...



Things are noticeably easing up now with the relaxation of the restrictions by the government. However, if you do find yourself self-isolating for whatever reason, please do know that the **Reach Help Network** is still available to anyone who needs us. If you do need some shopping, a prescription picking up or something from the post office, or just a chat, then do get in touch and we will be happy to help. Email a.degiorgiomiller@gmail.com or call 07771348013. Please do pass on this information to anyone in Reach who you think it may help.

The District Council have asked for feedback from residents regarding vaccine hesitancy, as well as other more general feedback on COVID-19 and testing. They aim to outline any continuing or new concerns, questions, myths/misinformation, insight on potential barriers, what might make access to getting the vaccine easier and what support or information people might be asking for which would encourage them. The intention is to use this information to help with planning, tweaking communications and providing reassurance where possible. If you have anything that you wish to pass on to the council then please do email a.degiorgiomiller@gmail.com and I will pass it on anonymously for you.

Vaccination transport available

There are a number of community transport schemes and taxi firms available to support people with transport to their COVID-19 vaccination appointment. This website has a link to an online form to show you the options available.

[https://www.cambridgeshire.gov.uk/residents/coronavir us/covid-19-vaccination](https://www.cambridgeshire.gov.uk/residents/coronavir/us/covid-19-vaccination)

Alternatively, you can call 0345 045 5219 for help. Where possible, most transport providers ask for a minimum of 24 hours notice for bookings. All drivers have up to date DBS checks.

Keep well.

Alex de Giorgio-Miller

Neighbourhood Plan

It has indeed taken us longer than anticipated to finalise the draft Neighbourhood Plan but ensuring that the draft accurately and comprehensively reflects the evidence we have gathered over the last two years has been a challenge. The draft Plan is now complete, has been approved by the Parish Council and will be released for comment and consultation in early June. Despite the delays, we remain optimistic we can **put a finalised Plan to the village in a referendum later this year.**



The draft Plan and a short summary of its key proposals will be published on the Neighbourhood Plan webpage www.reach-village.co.uk/neighbourhood_plan.html and there will also be an opportunity to comment online. Printed copies of the draft, the summary and a comments form will also be delivered to every house in the village. Once you have had a chance to read the documents we look forward to your views. We would prefer that you comment online as it makes collation easier but comments on paper would be welcome too.

In a bid to make up for the enforced lack of face-to-face engagement, we plan to hold drop-in sessions so that we can answer questions about the Plan. Details of the sessions will be circulated in the near future.

An inventory of buildings of interest in the village, which extends beyond the usual focus on Listed buildings, has been completed. It, too, will shortly appear on the webpage. The inventory offers some fascinating insights into how the village has developed and demonstrates that it is the assemblage of buildings rather than individual properties that give Reach its character.

Lucy Frazer MP attended the April Parish Council meeting when we reiterated our concerns about the Government's proposals for planning reform which we believe will significantly reduce the ability of local communities to shape how their home environments evolve and diminish the role of neighbourhood plans. Lucy relayed our concerns to Christopher Pincher, the Minister for Housing, who has stated that the Government will "encourage the continued use of neighbourhood plans and widen the areas involved in neighbourhood planning". We will be scrutinising the planning reform legislation as it advances through Parliament, to check that the proposed reforms match the sentiments of Mr Pincher's letter.

Nick Acklam

Chair Reach Neighbourhood Plan Project Group
n.acklam@reachparishcouncil.org 743749

Rosanna's Ramblings

As I start to write this, I'm sitting disconsolately in my clinic room in Cambridge listening to a massive thunderstorm while waiting for a patient who isn't turning up. I'm wondering to myself whether this fairly frequent annoyance would feel better or worse if it wasn't pouring with rain.



I could go out for a walk to kill the time. But therein lies a conundrum. We've badly needed the rain. Just in the last few days, since the April drought broke, the obvious gratitude of the natural world has been a joy to witness. The hedgerows and the trees have suddenly greened up. Charles is thrilled that his potatoes which were only just showing their faces above the soil a few days ago are now several inches tall. The weeds are happy, happy, happy.

But Brits being Brits, just as we are being released to a considerable extent from lockdown, the wetting that we're getting is already losing its appeal. Government advice is that even though we can meet indoors, outdoors is still better. Indoors with the windows open is fine unless, as in the clinic room, the rainwater comes charging in. So I guess in this transitional stage that we're all experiencing in the shifts in nature that go with the unpredictability of English seasons; with the unpredictable shift from lockdowns to freedoms; with the unknowability of how each of us as individuals will feel comfortable about embracing treasured aspects of life again and embracing our friends and loved ones again ... well with all those unknowables and with the uncertainties that still lie ahead regardless of government hubris and fingers-crossed-wishful-thinking.

I guess one certainty that exists for all of us is the perspective that comes from looking upwards and appreciating the sky above us. Perhaps I'm a little odd (or more than a little, many would say) but being able to look at the sky, at clouds unfolding and unfurling, at magnificent loftiness and delicate tracery, at patterns and ranks and tessellations made only of water vapour and condensation and ice, at the infinite variety and possibilities held in the sunrises and sunsets which are so magnificently and munificently offered us here with the big Fenland skies ... being able to look and be fed and nurtured and held by these gifts has been for me one of the emotional mainstays of my life.

And when, as happened to me the other morning when out for my walk, a beautiful sky is punctuated by the flight silhouette of a heron or the unmistakable curve of an arriving swift's wings against the blueness ... then I feel a huge surge of relief at the reminder that many things are a lot bigger than my parochial concerns.

As the deadline for my Ramblings approaches, I always ask myself (rather late in the day) "What shall I write about this time?" - and *this* time, the only word of inspiration that came to me on repeated posing of the question was "Clouds". I've had several experiences recently, when driving back into Reach at the end of a workday, of simply having to stop the car on the Green and take photos, so magnificent has been the cloudscape above the village.



Charles and I often observe "there's a lot of energy in the sky today" and that too is a reminder to me that the forces of nature and life move and swirl around us whatever is going on at the ground level of our lives. Indeed, it's not just the clouds that have been getting on with their business undeterred while the world has grappled with the constantly changing exigencies of the pandemic. My *bêtes noires* (or *bêtes grises*), the wood pigeons don't give a fig for anything that we experience as long as they can keep stuffing their faces, their huge bellies dragging along behind their tiny heads and leaving piles of the products of their digestion all over Charles's lawn. STOP ME NOW, because regular readers will know that I am quite capable of writing an entire piece about wood pigeons and my antipathy to them!

Anyway, back to the clouds, and nature and the seasons. As we walked this morning in the wood, it was so palpably obvious that everything had been held in abeyance – in suspended animation really – while April felt like February and there was no rain, but more frost than we've had for years. And now everything is hurrying to catch up with itself, to find itself where it should be, in its rightful state, ready to get on to its next phase of life ... and its next ...



And what better analogy could we have than that catching up after stasis, right here, right now? I'm hoping and praying that my plans finally to see my son again in early June – to have him to stay overnight and to give him a hug (whether he wants one or not) – will actually happen; and I've even suggested that my daughter might like to spend a weekend with us and catch up with her brother too. I think I will cry. Well, let's be realistic, I know I will cry – and if they have really grown up enough by now, perhaps they will cry too rather than be embarrassed by my emotional displays. And although I'm still pretty cautious and am certainly not one of the people who are planning to rush headlong back into the crush of humanity to make up for lost time, if I were a tree my leaves would definitely be unfurling. Please, Indian Variant of Concern, stay away and let us all bask in the physical presence of our loved ones long enough to start finding them just a bit annoying. I'd like that!

Rosanna Moseley Gore



Events Team

Its an understatement to say that we are looking for to a positive announcement on June 21st from Boris, regarding Covid-19 government regulations. Once we have that we will all be able to plan for the future.

The Events Team will be getting together as soon as it properly can and then dates will be finalized for our three Christmas events of **Lights Switch-on**, **Carols around the Tree** and the **Senior's Christmas Lunch** and hopefully others.

The Events Team

Tennis Court



Our tennis court is now 10 years old and has minimal maintenance done to it. Over that period, by a variety of means including villager donations, various events and most importantly, our **Sponsored Visitors programme**, we have saved just short of £2,500 which will now be used to **clean, seal and respray the court** with a further, up to £500, from the Grant Fund (to be followed by £200 a year for the next 10 years in readiness for further maintenance in 2031). The work will take begin at the end of June.

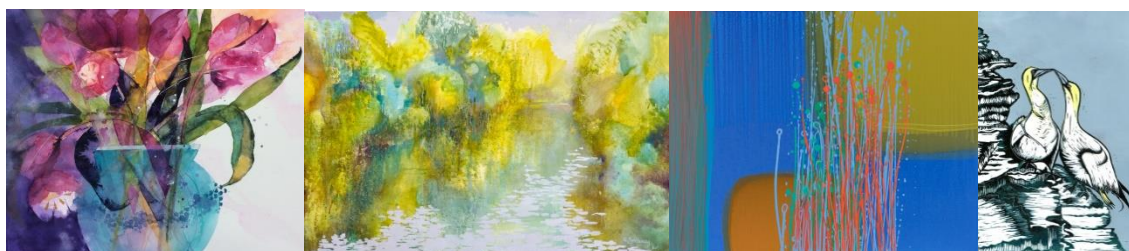
Going forward, the Parish Council who are responsible for the court, are looking to continue to raise funds so that next time maintenance is needed we are in the same happy financial state as we are now. The preferred route is to gain more Sponsored Visitors at £25 a year and we are planning to advertise in local village magazines. But before we do, if you know of anyone who you would like to invite, then please let me know and if there is anyone out there that wanted to make a donation, then that too would be very welcome!

There's some further information regarding the court on the back cover of this magazine.

David Parr

07887 563720 or davidmparr@btinternet.com

Cambridge Open Studios



The region's largest art event is back this July. Cambridge Open Studios has announced the 2021 dates for its month-long summer art event, which will feature an exciting range of exhibitions by over 300 artists at a selection of locations in the city and surrounding areas. This year there will be 40 new members taking part in the region.

Five Ways to Enjoy

For many artist members it will be Open Studios as usual with exhibitors opening their doors to the public over the four weekends in July. Some artists have chosen to 'open by appointment' and others have opted to participate with 'open windows' where artworks will be displayed in windows and outside spaces such as gazebos. In addition to home studios, Cambridge Open Studios are delighted to be partnering with The Pitt Building located on Trumpington Road in the heart of historic Cambridge. The Pitt Building will be hosting a wide of artists adhering to COVID guidelines over the course of the four weekends. Nine art galleries in the regions will also be hosting resident Open Studios artists over the course of the four weekends. Further information can be found online, on the App and in the E-Guide Book. Full details of how artists will be participating can be found in the artist's E-Guide Book listing and on the App.

New E-Guide Book Replaces Printed Guide & Supports App

For the first time in the history of Cambridge Open Studios there will be no printed guide - for two reasons, the planned move into the digital age, and to reduce the number of guides to save the planet has been accelerated by the pandemic and fear of possible transmission through contact. Over the last few years, the App has become extremely popular and is expected to see record numbers of download this year. Incredibly easy to use allowing the user to search by medium, location, weekend and artist name, it's the quickest and easiest way to find participating artists so don't leave home without it! Both the E-Guide Book and App will be available to download from the website from late May onwards so avid art lovers can start planning their studio routes in good time. Visit www.camopenstudios.co.uk/ to download the E-Guide Book and 2021 App.

What and Where?

For many artists 2020 was a year for creating and surviving the pandemic. This year is set to be an explosion of colour and fine array of work with specialisms including fine art, photography, pottery, glass making, sculpture, illustration, textiles, jewellery and furniture making, and more besides. The studios are spread throughout the whole region including many villages around Royston, Saffron Walden, St Ives and Chatteris as well as Ely and central Cambridge. The distinctive yellow COS flags will be out to identify participating studios.

The weekends are: July 3/4, 10/11, 17/18 and 24/25. Studios are open to visit between 11am and 6pm except those opting to take visitors via appointment.

Visitors are guaranteed a warm and friendly welcome with absolutely no pressure whatsoever to buy. All Cambridge Open Studios including The Pitt Building and participating art galleries are completely free to visitors for all ages.

Find Out More

By visiting the website you'll be able to see a full list of members along with their social handles, latest news and links to download the new E-E-Guide Book and 2021 App.

Follow on Twitter @CamOpenStudios Instagram @CamOpenStudios Facebook @CambridgeOpenStudios and look for #COSart2021

Website info:

Cambridge Open Studios www.camopenstudios.co.uk

For more information call Jo Riches on 07854 210837 or email jo@joriches.com

Getting to Know You – Jan Tabecki



What is your full name and where were you born?

My full name is Janusz Ryszard Tabecki, but apart from family, most people know me as 'Jan', which is pronounced 'Yan'.

I was born a twin in Cambridge in our family home, where my mother still lives. Both my parents were Polish born. My father was a Captain in the 1st Polish Armoured Division, which was part of the British Army, that fought in Northern Europe as part of D-Day during WW11.

My mother was a small girl when she and her family were taken by the Soviets in cattle trucks to Siberia from Eastern Poland. Fortunately, my mother and her family were released when the Soviets joined the Allies side. From there, they were moved through Persia and then ended up living in Tanzania, Africa for 8 years. In 1947, the family then came to England as refugees.

The regions of Poland that my parents came from got annexed to the Soviet Union, so both parents were unable to return home after the war. My father worked for Pye as a design draughtsman and my mother worked as a technical illustrator for Cavendish Laboratories, University of Cambridge

How did you come to live in Reach?

Liz and I were looking to move out of our mid terrace town house in Cambridge which we had renovated and extended (...there's a theme here that appears to follow us!!) and were ideally looking for a detached period house that we could put our stamp on. We looked outside of Cambridge as houses were more affordable. I passed an estate agents and spotted our present house advertised with the key words 'needs modernisation and renovation', which to a professional builder and someone who had renovated a few previous properties in the past, was not something that filled me with dread! We sold our newly renovated Cambridge house, moved into my brother's house (which I used to co-own) with two very young kids (Kasia was 2.5 years old and Anya 12 months). What was expected to be a 6 month build project ended up being 18 months, working on it virtually every night after work and weekends....the story of my life if you know me!

What school did you go to and did you enjoy it?

Coincidentally, just like Paul Redfarn, who was interviewed in the previous 'Within Reach', I also attended Milton Road Infants and then Junior School, Cambridge then went to Chesterton School, Cambridge (...like Paul, I can vouch that it was a tough school in the 1970's) and I got into quite a few fights and got slippered for playing truant! I enjoyed school to a degree, with my favourite subjects being metalwork and geography.

On leaving secondary school, I did a one-year technical course at Cambridge College of Further Education, Young St, followed by day release at Cambridge College of Arts and Technology, studying Mechanical and Production Engineering where I gained an HNC.

I did an apprenticeship at The Welding Institute, Great Abington, Cambridge working in the industrial robot dept and later within the Drawing Office as a CAD draughtsman. After 9 years, I decided on a career change aged 26, and left to complete an honours degree at Trent Polytechnic, Nottingham (now NTU) in Construction Management. I graduated with a 2.1 in 1992.

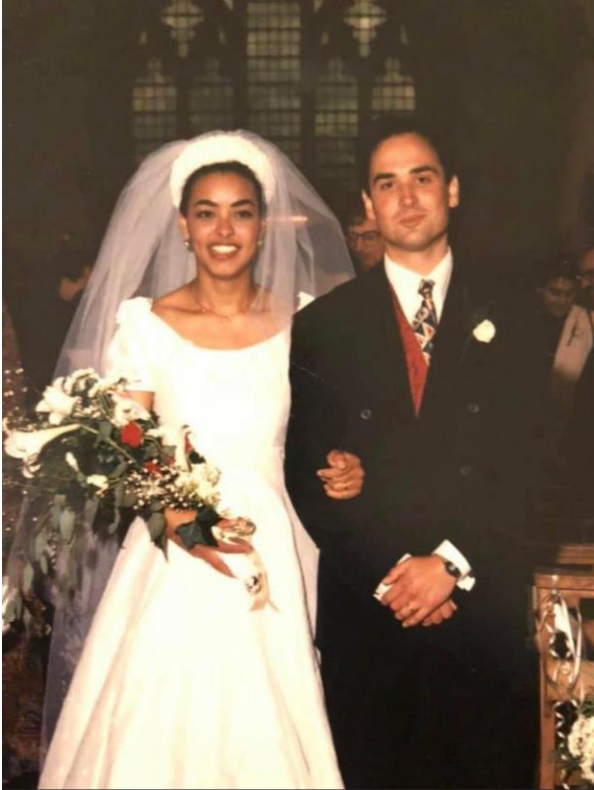
Where do you work and what do you do there?

Until July 2020, I was employed by French construction group VINCI as a Senior Design Manager.

My role was engaging and managing design teams working in design and build on multi-million-pound projects, predominantly in the commercial sector.

Unfortunately, due to them winning too few projects, not helped by Covid and being put on furlough leave, I was offered voluntary redundancy. I am currently 'semi-retired', working up to being fully retired!!

When did you marry and how did you meet? Do you have children?



Liz and I married in 1993, having met in Nottingham in 1989 when both of us were studying on our degree courses. We both graduated in 1992. The building course I was doing was based in the Arkwright Building. This building also housed the Textile Design Course that Liz was on. My course was mainly boys and Liz's mainly girls! Liz and I met through mutual friends and we got together in 1990. Both courses mixed at break time and after college in the pubs and clubs!

We are the very proud parents of two gorgeous and talented daughters, Kasia and Anya.

Like their parents, both Kasia and Anya decided to study at Nottingham Trent University, with Kasia graduating last year with a First BA Hons in Design for Film and Television. Anya, after studying Theatre Design for a year, decided to transfer to the Design for Film and Television degree also and will graduate next year. Since graduating Kasia has been lucky enough to work in London for Netflix/Universal on the series 'Master of None' and has recently completed her fourth stint in Liverpool at the TV soap Hollyoaks. Anya has returned to University and is really enjoying her course and mastering a lot of new skills. She is ambitious and no doubt will do well in her chosen career path.



What pets do you have?

We have Cisco, an adorable 15h horse. An Irish cob, who's full of character!

We have owned Cisco for 10 years. He is now 15. All other pets that the girls had when they were young have all gone to pet heaven!

What is your hobby?

Although I work in Construction, I do quite enjoy carrying out self-build work.

I enjoyed aeromodelling as a kid and belonged to Impington Village College Aeromodelling Club, which is still going and very active. I hope to one day return to this hobby.

A hobby that I have recently returned to (mid life crisis!) is restoring, building and riding motorcycles (I won some national awards when I was very active in my late teens and twenties).



I have a 1969 Triumph Trophy 650 cc (very Steve McQueen!) and a 1978 Moto Morini 350cc V-Twin.

The Triumph was a present from Liz and is rideable whereas the Morini is a future project, having had this same model of bike when I was in my late teens.

What do you enjoy about living in Reach?

We have lived in Reach for 20 years and very much enjoy the close community that we have here, where we have made many friends. We enjoy living in the countryside, having been 100% townies until moving here.

What is your philosophy in life?

Treat others like you'd like to be treated yourself, irrespective of who they are or what they do.

It doesn't cost you anything to be kind and considerate!

Joss Goodchild

Burwell Museum Coach Trips



I am sorry but our coach trips have come to the end, our last trip was Norwich on 11-12-2019. Due to COVID things have changed as you all are aware. I feel it time to call it a day, it's to much of a risk to carry on.

I would like to thank Margaret Moss for her assistance help in organising and all the trippers for joining us. Over the 10 years we have raised nearly £20,000 which has been well spent on the Burwell museum.

I hope you all have some good memories and not many bad ones.

I miss doing trips it was lovely meeting you all and I hope I see you around.

Barbara Turner



Out and About Spring 2021

The massed white blackthorn blossom which coloured hedgerows in early spring has been accompanied by clusters of fragrant pale pink/cream common hawthorn flowers. Also known as May Blossom, this is the only British plant to be named after the month in which it blooms.



There are small outcrops of bluebells in the verges along Little Fen Drove together with stands of cow parsley, dandelions and buttercups. The dual notes of the calling male cuckoo, so synonymous with spring, can be heard in the distance. Brimstone butterflies have emerged from hibernation beneath bramble leaves and in clumps of ivy, their yellow/cream colour and wing shape mimicked the foliage under which they sheltered. This species is the longest living at approximately 10 months. Swallows return and swifts arrive screaming, wheeling and turning on scimitar wings.

Wildlife benefits from less managed spaces and consequently our small garden in Great Lane is a healthy mix of unruly species-rich areas with a nod towards something approaching tidy edges. I hope that, within a lovely rural village like Reach, a marriage of two such approaches, within select green spaces, might be accommodated.

And so it was that I almost cried when nearby verges, full of colourful wildflowers and grasses, were unceremoniously scalped by the mower in May. They were no challenge to road user visibility but were instead a thriving insect microcosm. Despite their diminutive size these areas are invaluable for the food - insect - bird - mammal chain and awareness to the benefits of leaving leafier spaces is well researched and documented. Sadly my 2020 written protestations to both the County Council and our MP regarding this ruinous cutting regime fell on deaf ears.



Swallows, or barn swallows as they are also known, returned to our stables a week early this year, having travelled 6000 miles from the tip of southern Africa, a journey that takes 5/6 weeks. They fly here for more daylight, more food and less competition. The males arrive a week before the females, returning to the very place they were born, thereby choosing to live alongside us.

There have been vocal disagreements as four birds congregate on a single ceramic nest. These artificial cups (new from ebay) are well received by swallows and avoid the situation whereby the dry and brittle mud nests of previous years cascade to the ground full of chicks and parents, as their combined weight becomes too much. It also helps the issue of tired birds searching for wet mud for nest building if there are prolonged periods of dry weather.



4/5 cream eggs speckled red and brown are laid, these hatch in 2 weeks. Parent birds hawk for food, I read a hungry brood requires 8,000 insects a day. The first broods fledge, a second is started, a third is a race against time before the onset of Autumn when insect food sources reduce. Before their 1st birthday young swallows face the mammoth migration to Africa, arriving in time to benefit from a second spring and summer.

Within Reach Wood environs the rabbit population has noticeably increased and brown hares are visible in fields beyond Great Lane. Muntjac and groups of roe deer can be seen nearby on a daily basis. The shrill cries of a pair of kestrels are a familiar sound this year. A barn owl uses its favourite post at the fringe to the wood and at dusk undertakes a ghostly, low, ethereal flight through a tunnel of dark green foliage.

Villagers' sightings:

25.3 Pied wagtails search for insects on our muckheap, heads nodding, long tails wagging.

27.3 Hedgehog, large adult size, in our garden.

1.4. Geoff Newman saw a hedgehog in their garden at Hill Farm, the first one spotted in a long time.

(Tragically hedgehogs have declined by 50% in the countryside since 2000. Please help them by: putting ramps over ponds, avoiding the use of chemical lawn treatments and slug pellets, creating wild corners in gardens, checking bonfires, making holes in fences for wildlife corridors).

3.4. Pair of kestrels at Gareth and Lesley's field, mating on telegraph post.

3.4. Easter weekend - Hilary Fielding advised the bird fanciers and enthusiasts watched a rare black redstart on farmer Aves' muckheap, Little Fen Drove.

4.4. Reach Wood Brimstone and peacock butterflies. Ladybirds on sunny wooden posts.

6.4. Pair of swallows arrived (through snowstorm) to nests in our stables.

6.4. Nest of 4 blackbird fledglings in our garden (sadly predated).

8.4. Little Fen Drove: 1 roe deer, 2 kestrels, marsh harrier, cock pheasant, 2 hares.

10.4. Crows, rooks, magpies, jays near Reach Wood. Jackdaws perch on the donkeys' backs and search for insects.

21.4. Ali Kohlman saw 4 male and female roe deer behind their horse field, Blackberry Drove.



27.4. Hilary spotted a redshank on Tubney Fen this morning. Evening 'just arrived at the yard and a woodpigeon has flown out of a stable closely pursued by a sparrow hawk'.

28.4. Nick Acklam heard and saw his first cuckoo at Hurdle Hall.

2.5. Sparrowhawk took a female blackbird in our garden.



5.5 Coal tit (above) on our garden bird feeders. Flock of long tailed tits in the tree.

5.5 Little owl and bats in Great Lane. Goldfinch, greenfinch and yellowhammer in Aves' farm hedge.

8.5 Watched a sparrowhawk in the tree opposite the Redfarn family's house near Great Lane.

8.5 Nick Acklam saw a solitary swift over Tubney Fen. Ron and Penny Greenhill saw one flying over their house the same day.

9.5 Ali Kohlman noted swallows in the stable for the first time. Also witnessed the unusual sight of a rabbit chasing a hare in their horses' field.

May Jon Dunnett noticed 6 roe deer on the 24 acres.

9.5 Penny Greenhill email 'We saw a single swift on the morning of the 8th and by this morning (the 9th) there were at least 5 flying around our barn, no doubt about to come back to the nests under our pantile eaves which they have used for several years.

On the 2nd May a cuckoo flew into the poplar trees at the back of our garden not 100ft away from us. It gave 10-12 loud cuckoos then flew over us back towards Wicken fen. To hear it is wonderful but to see it is very special'.

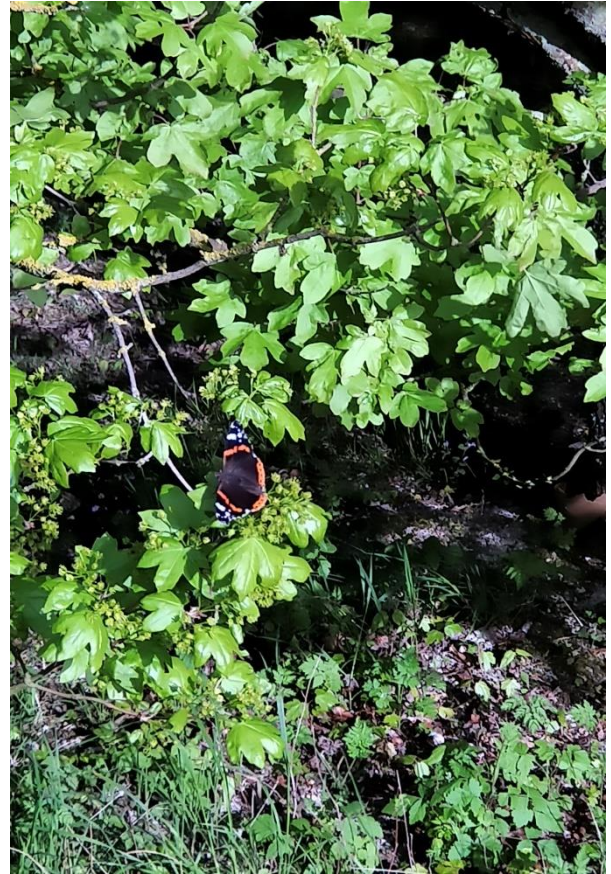
10.5 Tadpoles swimming in Ron's wildlife pond at his sheep field.

12.5 We noticed the sunny section of wooden benches and sides of trees in Reach Wood were covered with basking flies. Martin photographed a striking Red Admiral butterfly there.

14.5 Twice seen yellow wagtails on the fen road to Upware.

16.5. Penny text: 'Ron and I walked through Reach Wood this morning - it was warm and sunny and the chiffchaffs were in full song - at least three. Despite seeing swifts a week ago it has been very quiet'.

18.5. Dusk, barn owl hunting beside Reach Wood.



Martin's photo of Red Admiral butterfly, Reach Wood

Nick Acklam's Nature Notes:

23 March: Oystercatchers calling from the edge of Burwell Mere. A small group of Wigeon sit offshore. A dead juvenile Cormorant lies on the Bank by Pout Hall lake.

25 March: A Mute Swan sits atop a nest on the sharp bend of Weirs Drove, seemingly oblivious to the construction work (for an electricity storage system) that surrounds it. Indeed the Swan and its partner go onto hatch at least two cygnets. Sadly our Mute Swan pair on the Hythe were unsuccessful this year. Wild and feral goose numbers on the nearby fenland seem to be down this year. This is particularly true for Canada geese. I have no explanation for this.

26 March: I hear my first Chiffchaff of the year. This is late but unsurprising given the cold conditions.

28 March: Several Lapwing pairs are in the fields adjacent to Tubney Fen. Their swooping figure of eight courtship flights are a joy to watch.

29 March: Three Oystercatchers calling from the edge of the scrape on the Burwell side of Reach cycle bridge.

31 March: A brief but welcome phase of warm weather. Reed buntings are prominent on the reeds, funnily enough, on either side of Straight Drove. I infer that they are policing nesting territories.

3 April: A small group of twitchers gather on Little Fen Drove, drawn by sightings of a Black Redstart in the drove-side hedgerow.

13 April: My first sighting this year of Swallows - perched on the telephone lines over Chapel Lane. Despite the cold start to the spring this was three days earlier than last year and I know that other villagers have spotted them even earlier in April.

15 April: A dispersed flock of Fieldfare flying east over Tubney. I spot another small flock on the ground in Tubney on 30 April, presumably some of the very last winter migrants.

20 April: A Jay determinedly pursues a Crow across the field to the rear of our house.

27 April: I witness a Sparrowhawk strike on the allotments. The raptor flies in very low, enters a patch of rhubarb and emerges with a small pale bird in its claw - a wren or a tit of some description. All done with absolute precision and total silence.

28 April: I heard and saw my first Cuckoo of 2021 in the trees flanking Hurdle Hall.

6 May: Two sightings on our morning walk that emphasised the fragility of life. The rear half of a leveret has been left on the path into Tubney Fen. It is still warm. I am struck by both the fine bones but also the weight and power of the leg muscles. A little further along we encounter an injured, juvenile, Jackdaw, unable to fly but evading capture. Its turquoise grey eye was striking.

8 May: First Swift of the year spotted, incongruous in the wet and windy conditions that have brought the cold dry conditions of the last month to a close.

Joss Goodchild

Job Opportunity

Swaffham Bulbeck Parish Council are seeking to appoint a Parish Clerk who will also be the responsible Financial Officer. This is a home-based, part-time, permanent vacancy for typically 12.5 hours a week and offers a salary range of £22,627 to £29,577 (pro rata).

The successful candidate will be CILCA qualified or willing to work towards this qualification, a competent communicator, computer literate and well organised.

Further information is available from their website www.swaffhambulbeckpc.org.uk or contact Diane Bayliss on clerk@swaffhambulbeckpc.org.uk or call her on 01353 664632.

The closing date for applications is 18th June 2021.

Bottisham and Burwell Photographic Club

Be Bold, Be Fearless, Be Dynamic....



It's no secret that I really love a strong black and white image over a colour one. In fact, most of my images consist of high dynamic black and white shots. To me there is nothing worse than looking at a "wishy-washy" black and white image which lacks both contrast and confidence....

Sometimes you need to take a deep breath, be bold, and take strong imaginative risks.

I'm sure your well aware that now more than ever, at any point in time, more people are taking photographs and creating black and white images, thanks in a big element to the advent of convenient digital tools and technology. I'm definitely way more prolific now that I use an "electronic darkroom", that's posh "photographers speak" for laptop and a printer, instead of using a traditional wet darkroom. I can now edit an image and create a print anywhere at any time and I can do this without the use of smelly chemicals and a blacked-out room somewhere. Trust me, it was hard enough being a teenage photography student in the early 90's let alone adding the alluring smell of dev and fixer from hours in the darkroom.....

With a digital camera and electronic dark room, you can shoot shot after shot after shot for relatively no cost and develop your shots without the need for costly chemicals and photo paper. Make a mistake or you don't like what you see on the screen. Don't worry. Just start again. You've not had to print or develop anything. It's all part of the learning experience.

This means that a wonderful "knock-on effect" is that the standards of all our "amateur" images are of a consistently high quality. Black and white and colour. Don't believe me? Just look at what is posted on Instagram or Facebook, published magazines and displayed in local galleries. That is a great thing. Well done to you all!

Having just typed that and hopefully you've just read it, I am finding fault in all this. I'm seeing time and again the same issues with black and white images. There's just not enough, what's the word, "oomph". If you know a better phrase than "oomph" please insert it back there. I'm talking about images that lack mood, impact, clarity and purpose. I see it all the time in colour images, so why not in black and white ones?

I think it's due to the fact that a lot of photographers are a little bit scared of black and white. No, seriously.

So, what I can be done about this? To me, there is only one course of action to create a powerful black and white image. Be bold, be brave, be dynamic; rely on your creative instincts and take artistic risks.

Personally, I find, to create a successful black and white image takes a fair amount of confidence. Subtle is not a word I use when creating a black and white image. Too many photographers are coming over as way to subtle about the creation of their images and so end up with lacklustre results. Rather than a crisp black and white image, which ranges from jet black to flat white, they tend to end up with an image containing 50 shades of grey. Don't worry I've seen some pretty dull and ropey images from the pro's as well. I've omitted their names to protect the guilty.....

If you shoot and produce mainly colour images, then you tend to want your images to look as natural as the scene you photographed. And that's no bad thing, but some of you, please take a step back from your HDR sliders. Black and white is not natural, it's not how we tend to see the world around us, very few of us see in black and white, so your images don't have to be natural. I'm not saying you have to go over the top in all your images but do throw caution to the wind every once in a while and let your hair down. Your final black and white image may not have any resemblance to how it looked when you took it with your camera, but it says what *you* want it to say more than a colour image ever can, and that's totally fine and kind of the point of good black and white photography.

As with everything photographic, there are now numerous applications, plugins and desktop software you can use to convert and process your colour images into monochrome with just the swish of your mouse or finger, if you're using a phone or tablet. One of the best, and my favourite, is Silver Effects Pro, which is now part of the NIK Collection from DxO. I use this software for almost all of my black and white processing. It has some great pre-sets which can quickly get you and your image close to the look and feel you want and then you can use the tools and sliders to tailor the final personal touches of your masterpiece. I really can recommend the High Structure setting as they give fantastically punchy and dramatic black and white images for you to work with.

Do you know what, if your going to think big with your images, *PRINT THEM BIG*. Don't just upload your image to "the gram" and wait for likes. This not good practice. No. Don't get me wrong, looking at your images on your monitor they are going to look amazing, but by far and away the best way to enjoy your photographs is in the form of a print. Even images taken with your phone will allow you to happily print an image up to 12x16 inches. Add a white boarder and a nice frame to hang on your wall and your images will look even more magnificent.

This is what I do, and I'm not suggesting you have to copy what I do, but printing these days not cost the earth, and you cannot beat the feeling of having your images printed nice and big.

The 2020/2021 season for the Bottisham and Burwell Photographic club has now, sadly, come to an end. Well done to all those who entered their images. The level of work shown during these trying times has been wonderful and extremely uplifting.

Well we return, after a short summer break, with even more competitions, amazing talks form incredible photographs and practical evenings....

If you fancy coming and joining us for our new season, please do!! You can find out all about us by visiting our Facebook page, just look up Bottisham and Burwell Photographic Club in the search bar. Or visit us online at bottburpc.org or find us from your favourite internet search engine.

Whatever you do with your photography let it make you happy and proud.

Thank you for reading and until next time, happy snapping!

Elliot Needham

Bottisham and Burwell Photographic Club.

BOTTISHAM VILLAGE COLLEGE

Are you an Adult who missed out on a Maths GCSE?

Adult Learning Evening Courses

MATHS GCSE

Starts September 2021, Tuesday evenings, for one year
and to prepare you for the full course

PREPARE FOR MATHS GCSE

Starts Tuesday, 15 June 2021 for 5 weeks 18.30-21.00
(This short course is designed to bring your maths skills up to speed to give you the best chance of success in the full course)

Why choose Maths GCSE with us?

- Taught by experienced Maths teachers
- Fully accredited
- Tailored for adult learners
- Teaches real, lifelong skills
- Increases your employability
- Helps you to support your children with exams and homework

If you are 19+ and do not already have a Grade C (new Level 4) in Maths GCSE you should be eligible for a fully funded **FREE** place on our Maths courses.

INTERESTED?
Contact us to find out more or to book a place.

Bottisham Village College, Lode Road, Bottisham, Cambridgeshire CB25 9DL.
Telephone Number: 01223 811372
Email: adultlearning@bottishamvc.org Web: www.bottishamvc.org/adultlearning

CAMBRIDGESHIRE & PETERBOROUGH

Wicken Fen



A cuckoo, courtesy of Richard Nicoll

As the cuckoos call out on the Fen and restrictions ease for us too, we are happy that we have been able to open our hides, start cycle hire and Wicken Lode boat trips in Mayfly, as well as opening the shop and providing indoor seating in the café as well as outdoors and takeaway. Luckily for us, good ventilation has always been part of the spirit of place!

We have different trails to follow for family discovery this half-term. There is a 50-things (to do before you're 11¾) suite of activity prompts for visitors on Sedge Fen. Our one-way system is still currently in place, for Boardwalk and Woodland Walk, making access very easy for everyone, including pushchairs and wheelchairs – but assistance dogs only. For the littlest legs, we now have balance bikes available from the cycle hire centre. These could revolutionise your family walk! The Fen Cottage doors are open for peering through into the parlour and our Fen Cottage Explorer quiz is available with volunteers on hand ready to chat to you about fen life in the past.

Or on Adventurers' Fen, why not follow our prompts for a mindful walk, taking time to appreciate your surroundings at a slower pace. For walking your dog, the paths on Adventurers' Fen are all open, but please do keep dogs under close control to minimise disturbance to wildlife, especially nesting birds whether on the ground or along the edges of the waterways.

If you are interested in having a trip in Mayfly, please do give us a call to book a time and date for your group. Our numbers on the boat are limited for social distancing and we are only able to offer one trip a day at the moment – so it is a little bit exclusive just now! A great way though to see hobbies, hunting for dragonflies over the water, hear cuckoos and to just experience the different aspects of the reserve.

We will shortly be able to share news of what is happening as part of our 3-year Footprints Community Engagement Project, funded by the National Lottery Heritage Fund, so do keep your eyes and ears open for activities and opportunities to get involved.

Keep up to date www.nationaltrust.org.uk/wicken-fen.
Keep in touch 01353 720274; email wickenfen@nationaltrust.org.uk; facebook, Instagram and twitter @wickenfenNT

Isabel Sedgewick

Reach Village Annual Parish Meeting Minutes (DRAFT)

This took place on Wednesday 28th of April 2021 by ZOOM – no members of the public attended

1. Parish Council Chairman's Report

Councillor Cane started by thanking Alex de Giorgio-Miller, who resigned from the Council in October, for all her work whilst with the Council. Alex was a highly active member of the Council and continues to be work for the village as Play spaces officer and with the establishment and running of the Covid support network. The Council had recently welcomed a new member Hannah Webb and look forward to working with her.

The year had been dominated by Covid and lockdowns which had forced the Council into new ways of working, particularly Zoom meeting. These had generally worked well.

There had been a large amount of planning to discuss. The Neighbourhood Plan had progressed well under the difficult situation.

Should the Neighbourhood Plan be successful at referendum, the PC will plan as to how to move forward with residents' views.

2. County Council Report

None received.

The PC were disappointed in the amount of month reports received from the County Councillor this year. The PC did however appreciate his efforts in the successful LHI bid for the corner of Fair Green and Great Lane.

After the election **Clerk** to write to the new County Councillor inviting them to the July PC meeting and requesting a written report for each monthly meeting.

3. District Council Report

Once again this has been a year dominated by the COVID-19 virus, alongside flooding at Christmas and the New Year which affected a number of residents, in some cases very significantly.

1 COVID-19

1.1 The District Council took an active part in the cross-county public health effort. Colleagues in South Cambridgeshire kept the two of us regularly briefed for which we were extremely grateful. The District Council was responsible for the distribution of a number of different COVID-related grants for local businesses and for individual support.

1.2 Following the initial lockdown in March, Ely Market opened to essential goods on 11 June, and to other stalls a month later. District Council operated play areas opened on 4 July, and the Council offered advice to parishes wanting to know how to reopen their play areas in a COVID-safe way.

1.3 Early in 2021 the District Council also took part in a new county-wide programme for ensuring taxis and private hire vehicles are COVID-safe. This provides video training, and a subsidy for fitting a quality standard screen in the vehicle.

A sticker in the vehicle will show which drivers have been trained. It is hoped that this scheme will be expanded to voluntary car schemes.

1.4 Following a proposal from our council group, the Council set up a COVID Recovery Working Group to help steer the district's recovery from the pandemic. This began to do some useful work but was closed down prematurely by the Council which was disappointing as there was so much more it could have done.

2 Mepal Outdoor Centre

2.1 In a surprise move in July 2020, the District Council's ruling group called a behind-closed-doors meeting of the Full Council to discuss 'an asset management matter in the parish of Mepal'. The local press quickly revealed that this meeting was to discuss a project that had already been taking shape in secret for eighteen months, to replace Mepal Outdoor Centre with a crematorium. To date approaching a quarter of a million pounds has been spent to progress this scheme, which has not yet reached the stage of a formal planning application.

2.2 The location of the proposed facility is just twelve minutes from the existing crematorium at March, which is hardly operating at capacity. A new crematorium at Huntingdon is also due to open imminently. A crematorium in Mepal will therefore only be viable by poaching custom from its neighbours in what is becoming quite a crowded market.

2.3 In April the Council's Finance & Assets Committee agreed by a majority to submit a planning application to demolish the remains of the structures at Mepal Outdoor Centre.

3 Planning

3.1 In summer 2020 the Government launched a consultation on radical changes to the planning regime in England. Councils' Local Plans would be shorter, quicker to produce, and restricted to 'zoning' of sites into three categories (Growth, Renewal, or Protected) and policies on design.

3.2 The District Council agreed three new Supplementary Planning Documents during the year, on the Natural Environment, Custom and Self-Build Housing, and Climate Change. The Council recently launched a consultation on a limited review of its current (2015) Local Plan, concentrating only on policy GROWTH1 in the Plan. This is proposed to show a housing requirement of around 8,922 dwellings between 2011 and 2031.

The Council's view is that it already has a housing supply of 10,175 in this period, so that it will not be necessary to identify any additional housing allocations to 2031.

3.3 Outside the Bottisham ward, but of some general interest, a planning application has been submitted for the second phase of housing at the former MOD site at the Princess of Wales Hospital in Ely. An application for redevelopment at the hospital has also been submitted, and the two have become entangled with a proposed land swap between them.

4 Finance and assets

4.1 The Council once again froze its share of the Council Tax in its February budget. However, the Council's Medium Term Financial Strategy shows plans for an increase of £5 per annum at Band D, the maximum allowed by law, from 2022 onwards.

4.2 The Council's waste company ECSS requested and was awarded an increase of £91,000 in its management fee for the first six months of the year to cover agency staff costs due to COVID, though it is not clear on what contractual basis this was granted. Meanwhile the Council's other trading company ECTC was not in a position to repay either of the loans due to the Council in March 2021. The Council agreed various changes to its current loans:

- The original £5M loan due to be repaid 31 March 2021 at an interest rate of 5.22 per cent will be replaced with a new loan with a final repayment date of 31 July 2023 and a reduced interest rate of 3.5 per cent.
- The loan for the MOD properties in Ely due to be repaid 31 March 2021 at an interest rate of 5.22 per cent will be replaced with a new loan with a final repayment date of 31 March 2023 and a reduced interest rate of 3.5 per cent.

The Mayor's Combined Authority has also agreed a request from the Council for a re-profiling of loans in respect of housing schemes in East Cambridgeshire:

- Haddenham: to extend the loan until March 2023 (current balance £2.8M) with an interest free period of twenty-two months between April 2020 and March 2022.
- MOD Ely: to extend the loan until March 2023 (current balance £24M) with six month interest free period between July and December 2020.

4.3 The Finance & Assets Committee made the decision to appoint the Leader of the Council as a 'Custodian Member' of the 'East Cambs Community Land Trust', and that this Trust should be listed as an 'outside body' from which the Council should receive annual reports. It seems extraordinary that this body should claim to be a community-led independent 'Community Land Trust' when it has no genuine community connection, is top-heavy with councillors from the Council's ruling group, and shares office space at Fordham with the Council's own developers Palace Green Homes.

4.4 The Finance & Assets Committee oversees the Council's working group considering bus travel, cycling, and walking in the district. The results of the March-May 2020 survey were eventually collated, and councillors on the working group (including Charlotte) have been considering these. A request was made to the Combined Authority for support for improved bus provision. The Lib Dems suggested the responses on walking and cycling improvements be grouped on a location basis and shared with parish councils to draw on their local knowledge.

4.5 The Council has decided it wishes to remain one of the handful of local authorities left in England where on street parking is still enforced by the police and not by the council. Because parking enforcement is not a police priority, the Council has decided that its preferred way to introduce some enforcement of on-street parking in the district is to use Council staff acting as police volunteers, who would operate under police control. This seems a very strained set of arrangements to avoid doing what all except eleven councils in England outside London do.

4.6 A motion from the Lib Dem group to the Council recognising that 'black lives matter' was referred to the Finance & Assets Committee where it was subjected to an amendment to remove all reference to black lives mattering.

5 Operational services

5.1 Having been pressed into declaring a Climate Emergency in October 2019, the Council has been working on its Climate Change Action Plan. The Lib Dems successfully proposed a number of changes to make the plans for tackling climate change more ambitious. The Council has achieved a few 'quick wins', moving to a 100 per cent renewable energy 'green' tariff and aiming to replace all its street and car park lighting with LEDs by the end of the year. The council noted a 75 per cent drop in business mileage since March 2020 due to COVID-19 related restrictions—there is no guarantee that this will be sustained.

5.2 The Lib Dems successfully proposed that the Council join the growing number of local authorities signing up to support the Electricity Bill, a proposed piece of legislation which would allow electricity generators the right to become local suppliers and sell their energy directly to local people.

5.3 The Lib Dems submitted a motion to the February Full Council meeting calling on the Council to formally endorse the Fens Biosphere project. Disappointingly this proposal was significantly watered down, so that instead of supporting the Biosphere application, the Council is now committed only to request further information about the implications and benefits of designation of the Biosphere, and to write to Cambridgeshire ACRE to seek further information. This is all the more strange as Cambridgeshire ACRE is based in East Cambridgeshire, in Council managed premises in Littleport. However, it is good news that we managed to get this issue on to the agenda for public debate by the Council for the first time.

6 Administrative issues

6.1 The Council's ruling group has decided to introduce a new Audit Committee with effect from May 2021. Our preference would have been to reorganise the Council's committees by establishing a new Strategic Planning & Economic Development Committee to deal with the pressing issues facing the future of our district, and to avoid the conflict of interest in having the same committee dealing with finances and planning, but this was defeated.

6.2 Face to face appointments for Council services were reintroduced in April 2021, but only for a very limited range of services: EU settlement scheme interviews, homelessness issues which cannot be dealt with remotely, training for taxi drivers, essential appointments, and Environmental Health PACE interviews. All such appointments need to be prebooked, either online or by phone.

7 Finally

7.1 We have replaced our regular monthly face to face surgeries in Bottisham with online Zoom surgeries. These are advertised in Village magazines, Parish Council reports and on Facebook.

4. Village Centre Report

Councillor Trump reported. The year had been quiet for the Hall due to Covid; however, they were solvent thanks to a £10,000 government Covid recovery grant received. Most of this money had been spent on wall repairs. The Trust Deed had been rewritten but not yet adopted.

More recently Graham Radford had stepped down from being Chair, decisions had not yet been made on future changes to the running of the Hall.

5. Neighbourhood Plan

We began work on the Reach Neighbourhood Plan, as a project under PC auspices, in early 2019. Our aim was, and is, to give residents greater control over the future evolution of our village.

If approved the Plan will be legally binding - it must be considered in any development application in the village.

We have made good progress despite the constraints imposed by Covid19.

Draft Plan

A draft Neighbourhood Plan was approved by the PC in early April and will shortly go out for consultation. Printed copies of the draft Plan will be posted to every home in the village in the next few weeks and a copy will go onto the Reach Neighbourhood Plan webpage. The consultation will last for 6 weeks.

The evidence base of the Plan is now virtually complete. Its key elements are a landscape analysis by Alison Farmer Associates, a design code by AECOM, a biodiversity assessment by MKA Ecology and a residents' survey. All are also accessible on the NP webpage. We are tidying up two annexes to the Plan:

- a list of Local Green Spaces, with short justifications for each, as a vote for the Plan at referendum will formalise the status of the areas.

- a list of buildings of historical significance which goes beyond the Listed buildings of the village and emphasises the importance of assemblages of buildings. ECDC has kindly agreed on our behalf to complete the Strategic Environmental Assessment and Habitat Regulation protocols which are necessary adjuncts to the Plan.

Our Neighbourhood Plan is relatively simple. We are a very small neighbourhood, the practical and physical constraints to development are significant and there is a strong and clear consensus within Reach about how the village should evolve, namely limited growth that doesn't threaten the assets that make Reach a good place to live. Our Plan therefore focuses on policies to:

- enable modest housing growth at locations which minimise the adverse impacts of development
- protect the village's distinct sense of place and significant archaeological and ecological assets.

The Plan does not allocate new sites for housing development, focusing instead on incorporating some of the outstanding applications in the village.

The plan catalogues and protects the landscape, environmental and cultural assets that make Reach such a distinctive and special place to live and will give enhanced, Local Green Space, protection to the Hythe, the Drying Green, and other recreational spaces around the village. It also protects:

- the views into and out of the village that villagers most value
- the remaining undeveloped land between Reach and Burwell.

The plan is supportive of new businesses and farm diversification in the neighbourhood where there will be no detrimental impact on villagers' amenity.

Insofar as it is able, the Plan seeks to:

- protect our existing services and facilities, is supportive of any proposed expansion of sporting and recreational facilities and protective of those that already exist.
- limit vehicle traffic through the village and to initiate the process of creating vehicle free 'greenways' between Reach and Burwell and Swaffham Prior.
- mitigate the predicted impact of flooding arising from climate change and is supportive of any green energy schemes that can be proven to be viable in our neighbourhood.

The Plan identifies challenges which the village will need to address over the next few years, notably the extent to which we wish to promote Reach as a recreational destination and the associated issue of car parking.

Finally, the plan offers a range of practical projects for improving our environment which the village can develop as we return to something like normality.

Funding

To date the Project has been almost exclusively funded by Central Government grants. Only the cost of our launch event in July 2019 has been met by parish funds. In FY 20/21 we spent £8476.20 (excluding VAT) largely on professional fees. Since we began, we have spent £14230.60 (excluding VAT). We understand that we qualify for further Central Government funding in FY 21/22 to complete the Plan and have begun the application process.

Next steps

We will shortly be seeking comments from our statutory consultees (Anglian Water, UK Power Networks, Natural England, English Heritage etc). And of course, from villagers.

In addition to delivering a copy of the draft Plan to every household and, in a bid to mitigate the enforced lack of face-to-face engagement, we will host drop-in sessions probably online, but we might try something on the Green, so that we can take ideas and answer questions. Once we have gathered the comments we will, where necessary, amend the Plan and re-ask PC approval before submitting the Plan to ECDC for a further 6-week consultation and then independent examination. If we clear that hurdle then the Plan will go to a referendum of residents on the electoral roll, so that the village has a final say in the document.

Outlook

We remain cautiously optimistic about being able to put a finalised Plan to the village for endorsement (or otherwise) in a referendum later this year.

6. A to B1102 Group

The AtoB1102 group is a new group to highlight & assist with transport issues along the B1102 from Burwell to Quy. Councillor Trump has joined on behalf of the PC and recently attended his first meeting, notes below - Reach Update: Andrew introduced a number of current community issues:

Frustrations with commuting travel into Cambridge due to the lack of viable alternatives to car transport

Bus services – lack of service given proportion of buses that are routed through Reach

Reach Neighbourhood plan – made clear people don't use the bus because the service is not reliable enough – timings are not good enough

Lack of consultation with the GCP – why weren't East Cambs consulted about the issues?

A to B1102 – now a standing item on the Reach Parish Council agenda

Swaffham Prior Update:

Heating Scheme now moving into delivery planning stage, will see significant disruption over end of 2021 into 2022 as roads are dug up to lay the heating network

Mill Hill traffic speeding – issue about to be brought in front of Parish Council by residents on Mill Hill who are increasingly frustrated by the amount of speeding and associated risks to safety and noise

o Emma – CAM update including any insights on the recently discovered "map"

CAM plan launched on the Combined Authority website in late March. Lots of issues, but view that we lobby to get the corridor provisioned now! Option – to initiate discussion around preferred routes – could this enable engagement? Recognition that depending on which party wins the Mayoral Election, the CAM could either be canned or moved forward.

o Andrew – update on the discussion with Lucy Frazer MP

Lucy was meeting with Reach council about another matter, but Andrew was able to raise transport issues in the meeting – Lucy engaged, we need to push, Andrew awaiting response to his letter. Discussion about the CIL money which will be part of the large new housing provision in Burwell – how do we lobby to ensure this money is passed by East Cambs to the County to be spent on infrastructure improvements along the B1102 given the impact the new houses will have on congestion, increases in car movements etc?

o Jon/Tania – update on meeting with Burwell PC.

Tania and JC had positive reception with Burwell Parish Council – we expect them to put forward a representative. Helen – one of the Parish Councillors took a particular interest.

• Lobbying Document (see attached) – to agree how we use this briefing document and who will contact which prospective local & district council candidates over the coming week

Agreed to send the Lobbying document to all prospective candidates, to request a clear statement from all candidates as to their commitments if elected. This to be sent to the mayoral candidates and to the prospective district councillors.

Actions: Tania – to contact the mayoral candidates, Emma to contact the prospective County Councillors AIM – to get a document into the public domain by Monday 3rd May.

Actions: Create 1 pager – update for circulation to all Parish Councils and local village magazines – JC will lead on this with Emma and Tania.

- In addition to lobbying prospective candidates, to agree our priorities for May & June including updates for the Villages & Parish Councils

Cycle Survey: Agreed to build the survey based on Colin's excellent starter questions (Emma to do this) but hold the launch until after the Mayoral & District Council elections.

7. Friends Of Reach Wood.

The group would like to improve biodiversity in Reach Wood, including the meadow.

A consultation amongst the group was carried out, and it is hoped that this initiative can now move forward.

A timetable, a written proposal and a map showing what we would like to do must be presented to the Woodland Trust for approval.

Suggestions are now being collected about what should be planted, where we should plant and when we should plant later this year. For example, should we aim for a 'planting day' trying to get villagers involved, or should aim for a more spread-out approach?

8. A.O.B

The PC had received a suggestion of an Oral History Project in Reach.

Some time ago I was in Tideswell in the Peak District and saw their red phone box now in use as a 'History Box'. By dialling 1 of 9 numbers callers could hear short extracts about various aspects of the local history and life in Tideswell related by local people.

We have so many wonderful aspects here in Reach that could be available in short recordings of perhaps 5-10 minutes including - Local History and the Fairs, the Lode and Fen Skating, the Port, the geography, the wildlife in our green spaces with Wicken Fen on our doorstep, the Dyke, local stories, etc. The recordings could be of interest to local people, children, and visitors, perhaps stored in the church when it is updated or in a booth on the side of the Village Hall if the phone box is not available.

The PC were very supportive of this idea. **Clerk** to contact the resident to ask for proposals on how this should be moved forward.

It was noted that the telephone box in Reach was a working phone box for emergency call, and that late last year the PC had concluded that this emergency phone should be retained. However there maybe other ways or places where the oral history project could be established.

Burwell Museum



Thank you very much to everyone who supported our opening event on the 23rd of May. I'm writing this on the day and the weather is still just about holding up, although we've had a few showers. We're incredibly grateful to Pat Kilbey and the Burwell musicians for all their help over lockdown and as we reopen. We're really glad to have almost everything back open at the museum now and we're grateful for everyone's patience as we wait for it to be safe to open the upper floors of the mill again.

Our next event will be the summer fete, which will be on the 25th of July from 11am to 5pm. We'll have the musicians again and hope for a lovely summer day to enjoy the museum at it's best. As with everything this year, keep an eye on our social media and on posters around the village for exact details as we work out what we can safely do to enjoy the museum together.

As we get back to having volunteers on site it would be great to welcome some new ones, and our mill team is particularly keen to have more members as we catch up with vital maintenance work! If you are free on a Tuesday, enjoy working on practical tasks as part of a team and would like to learn more about the windmill and how you can help it to keep working, we'd love to hear from you. Please contact Alison on volunteers@burwellmuseum.org.uk for more information, or feel free to drop by on a Tuesday morning for a chat. We're also looking for more people for front of house shifts on Thursdays and Sundays if you'd prefer that.

Could you help keep the sails turning? We're looking for new members for the mill team!

Alison Giles

Website: www.burwellmuseum.org.uk

Tel: 01638 605544

Email: museum@burwellmuseum.org.uk

Burwell Museum, Mill Close, Burwell CB25 0HL

Tales from a Reach Garden

Our weather has been very strange this year. When the very wet winter weather finally came to an end in March and the weather warmed up I almost cheered. Our potatoes went into the ground along with onion sets, garlic and shallots.



Then the temperature plummeted in April although the days remained very bright. I don't recall ever having experienced so many frosty days in April. Our poor tomato, courgette, pepper and aubergine plants would be taken to the polytunnel to enjoy the bright sunshine, then brought back indoors late afternoon as the temperature fell. We did this "Tomato twostep" (as named by Richard) almost every day in April. We also had to cover everything we'd planted outdoors with fleece. I didn't sow any more seeds directly into the ground because they probably wouldn't germinate, especially as it was so dry too. We actually watered our potatoes and onions in April – we've never done that before. So, what had happened to the April showers? It seems that they have turned up in May instead, along with the usual May showers and then some more.

In Britain, this period between early March and early June used to be known as the "Hunger gap" because this was the time of year when the winter crops had come to an end and the new year's crops were not yet ready for harvesting. Even now there are hardly any fresh vegetables available locally and vegetables have to be imported from warmer climates instead. I wonder what our predecessors would have made of this weather.



Peacock butterfly on cherry blossom in Reach Wood

One of the good things about the cold dry weather in April was that tree blossom and flowers lasted much longer than usual looking spectacular against the clear blue skies this April. I hope this has given enough time for pollinating insects to have done their job in spite of the cold temperatures. Out of all our over-wintered plants, only the broccoli are still cropping. Everything else that had overwintered has been lifted and either eaten or stored in some form or other: leeks, cabbage, kale, carrots and turnips. We've had a huge number of broccoli spears from our plants, this spring from a variety called "Red Arrow" and they've stayed in bud for much longer than normal. We are still picking them – eating what we can and, blanching and freezing what we can't, to enjoy later in the year.



Broccoli spears still being picked

Apart from the fruit cage, we have three permanent beds in the vegetable garden for rhubarb, asparagus and strawberries. The rhubarb kept bolting in the cool dry April weather, i.e., putting out flower spikes instead of edible stems. When this occurs, the flower spikes are best cut down as close as possible to the lowest stems without damaging those. Apart from the forced rhubarb, only now are new stems growing from the base of the former flower spikes and we've picked a lot of these already for poaching and for rhubarb muffins (yum!). Rhubarb is easy to keep in the freezer; just rinse off any dirt, dry the stems and cut down to preferred chunk sizes and pack with sugar in a rigid, freezer-proof container. You'll need roughly 50g (2oz) of sugar to 450g (1lb) of rhubarb.

We've also started to pick asparagus now - another crop which was late starting this year and also needed watering in April. We grow just enough for ourselves to eat which we enjoy in spring. It is such a treat, steamed and coated in butter, so we never get to freeze any, except, rarely, as soup.

Our strawberries did enjoy the April sunshine and put out flowers, which alas got frosted (the flower centres turned black) and won't develop into fruit properly. However, thanks to the regular watering and milder temperatures in May provided by Mother Nature, they have put out many more flowers since then and the local bees have been busy visiting them.

Everything else is slow to get going, raspberries are still in bud instead of flower, the blueberries are still in flower. The currants have small green fruits on them. The peas and broad beans are growing nicely, as we sow them in pots to germinate them indoors, then harden them off in the polytunnel in March. They were planted out in April and are growing well. Everything else is still below ground or at baby leaf stage, or in pots waiting to go into the ground, or into bigger pots.



Strawberry plants growing under mesh, to let bees in and keep birds out

The last seeds to have been sown into pots are the autumn squash (pumpkins and butternut) and climbing beans. This is something I usually do in May. I've learnt from past experience that they rarely get the chance to germinate if sown outdoors directly into the soil, either because the soil can become too cold or too wet for them, or most likely, they are simply too tempting for the local rodent population to resist. I sow the seeds in compost in pots indoors, then once germinated, I move them to the polytunnel where they benefit from the light and the warmth of any May sunshine. Then they are hardened off for a week or two outdoors before planting in their beds. It will be a month or more before we get to eat the first beans, but we have to wait till Autumn before harvesting the squash.

At least we can crop broccoli, rhubarb and asparagus at the moment and it will be a month at least before we can lift and enjoy the first crop of new potatoes – but you can see why this time of year used to be known as the Hunger Gap.

Danuta Gibson

Food Focus

Two Variations on a Lemon Pud

The first recipe is from Moro and I'm sure a modern take on the better known Lemon Delicious or Lemon Surprise which I have a feeling originates from Australia and is also below. The use of yoghurt in this ensures it's a light pud and the addition of pistachios gives a bit of exoticism. I always find bain-marie dishes a bit of a faff, but both of these are worth the effort.



Ingredients

3 large eggs, separated
70g castor sugar
2 vanilla pods, split in half lengthways
350g plain greek yoghurt (not too thick)
finely grated zest of 1 un-waxed lemon and orange
juice of 1 lemon
20g plain flour 30g shelled unsalted pistachio nuts,
roughly chopped

Method

1. Preheat the oven to 180 degrees Celsius and put a large dish of water on the middle shelf to warm (creating a bain-marie). The dish needs to be wide enough to fit a 25cm cake tin in or equivalent size rectangular tin and deep enough to allow the water to come half way up the side of the tin. A roasting tin is perfect.
2. Grease the cake tin and line with baking paper.
3. In a bowl, beat the egg yolks with 3/4 of the sugar for at least 5 minutes until thick and pale.
4. Scrape the seeds from the vanilla pods and add to the bowl along with the yoghurt, lemon zest, lemon juice and flour, and mix well.
5. In a separate bowl, whisk the egg whites with the remaining sugar until soft peaks form.

6. Gently fold the whites into the yogurt mixture until just combined. Pour the mixture into the cake tin.
7. Carefully lower the cake tin into the bain-marie, making sure that the boiling water comes halfway up the tin. Bake for 20 minutes.
8. Sprinkle the chopped pistachios evenly over the top of the cake and continue cooking for a further 20 minutes or until the top is light brown in colour. The correct consistency of the cake should be; light sponge on top with a wet custard below. Leave the cake in the tin until you're ready to serve.

Serve with yoghurt or creme fraiche and seasonal berries or stoned fruit.

Lemon Custard Pudding Cake (Lemon surprise/Lemon Delicious)

Ingredients

3 lemons
 100g/3½oz unsalted butter, softened, plus extra for greasing
 200g/6oz vanilla sugar or plain caster sugar
 4 medium free-range eggs, separated
 75g/3oz plain flour
 500ml/17fl oz milk
 Icing sugar for sprinkling on top

Method

Preheat the oven to 180C/160C Fan/Gas 4. Butter a 2 litre/3½ pint shallow ovenproof dish.

1. Grate the zest from two of the lemons, then squeeze the juice of all three.
2. Cream the butter with the sugar and lemon zest. Beat in the egg yolks one by one. Don't worry if the mixture curdles. Next beat in the flour a spoonful at a time, alternating with slurps of milk and lemon juice.
3. Once that is all in, whisk the egg whites in a separate bowl until they form stiff peaks, and fold lightly into the lemon batter.
4. Pour the mixture into the baking dish, then stand the dish in a roasting tin. Pour enough boiling water around the dish to come about halfway up the sides.
5. Bake in the oven for 40–45 minutes until the pudding is golden brown. Serve hot or warm, with or without cream. It looks good if icing sugar is sprinkled on top.

Catherine Gibson

Donkey Event in Reach



Sunday 27 June 2021

The Eastern Region of the Donkey Breed Society are undertaking a walk, ride, carriage drive through the fen.

Finishing on the village green at approximately 12.30pm

*You may like to come and meet the donkeys
 (Please be aware that generally donkeys don't like dogs)*

Swaffham Prior School

March 15th of this year brought with it a very special event for Swaffham Prior C of E Primary school: the opening of our brand new Nursery provision.

Offering 15 hours per week (mornings), we have welcomed six new children into our school family so far. Much of their mornings are spent with their older peers from the Reception class, engaging in child-initiated learning. The Nursery children also have separate literacy, numeracy and music sessions with a designated teacher, suitable for their age group.

Our school is proud to offer a warm, comfortable setting, with varied indoor and outdoor areas to inspire learning.

We are very excited to already have children signed-up to begin the Nursery in September 2021, but a few places are still available. If your child turns 3 before September 1st, 2021, please contact our office at office@swaffhamprior.cambs.sch.uk for information on securing them a place.

We can't wait to meet you!

Letter from the Vicarage

It's great to have the expectation of further relaxing of Covid restrictions over the next few weeks and a cautious return to a bit more like 'normal' life. For all of us, the last 15 months have brought significant challenges and as we move forwards, it's good to reflect on what we want to hold onto from what we've learned together during these difficult times, especially about the value of community and our interdependence.



As a church community, we're going to be building on what we've learned about having an online presence on Facebook and Zoom, as this has been such a precious way of staying connected, as well as building new relationships. We're also going to be continuing to look for ways of being outdoors, as we've discovered afresh what precious spaces are our churchyards, with the rebuilding of the arch behind Reach Church, and the beauty of St Mary's churchyard, as it was allowed to rest and grow a little more wild last year. Look out for more churchyard trails and other ways to explore these wonderful resources.

In-building services restarted in St Mary's and St Etheldreda's at Easter, with the current pattern of our main Sunday service at 10am at St Mary's, livestreamed to Zoom, with a fortnightly service earlier in the day at Reach. When we have a date for the building work to start in Reach church, we will let you know how we're planning to hold services during the time when the building will be closed for the work. Over the next few weeks, we're hoping to restart some of our other groups and activities, including Refresh Café for babies, toddlers and their carers, and other family activities. There are more details each week on our Facebook page and our website. In the meantime, we have groups for families and children meeting on Zoom. Regular updates and more details about how to connect with us are on our website <https://stmarysburwell.org.uk/> or our Facebook pages www.facebook.com/stmarysburwell/ and <https://www.facebook.com/messychurchburwell>.

May 4th 2021 was a significant moment in history, as marriage registers were formally closed and a new system of registration has been introduced, which for the first time gives the option for the names of mothers to be included in the marriage register. There were prayers in both our churches on Sunday 3rd May, to mark this poignant change. The marriage registers in St Etheldreda's, Reach date back to 1909 and the records for St Mary's, Burwell go back to 1561, but only the most recent registers from 2017 are kept at the church, the others having been deposited in the county archive.

We will be able to keep one copy of the current registers for reference and will of course still be able to conduct weddings in St Mary's and St Etheldreda's using the new registration system, so please get in touch if you would like to find out more about arranging a wedding.

Some of you will know that for the last year, Ely Foodbank have been working with local volunteers to store food supplies and arrange delivery as needed. I have been doing this in Burwell since April 2020 and want to say a big thank you to all who have continued to donate to the foodbank, which has been much appreciated.

If you are struggling, or know someone who is, and need help accessing the foodbank, please get in touch. For many, the last year has brought grief, financial hardship, struggles with mental health. If it would help to chat or if we can pray for you, please get in touch.

God bless you

Eleanor Williams

Vicar of Burwell with Reach 01638 741262
vicar@stmarysburwell.org.uk

St Etheldreda's Church – from Reach Development Group

In 2014, St Etheldreda's church received a very generous legacy from the estate of Maisie Whitehead, which will enable us to improve the facilities in the building for both the church and the community.

After years of discussion and some unavoidable delays, we are finally ready to move ahead with our vision to make St Etheldreda's a warm and welcoming space for us all to use. It will still be very much a sacred place, used for church services, quiet days and retreats, a space where people can drop in for quiet contemplation and prayer. It will also have the flexibility to be used by the community for a variety of purposes, which could include coffee mornings, small meetings, concerts and exhibitions; maybe a book swap area, a history display... and many other possibilities.

We have prepared a leaflet giving more details and many of you will have received a copy by email. If you haven't seen one, printed copies are available in the church, which is usually open on Thursdays and some Sunday afternoons.

The plans have been submitted to the church authorities for approval and have also been sent out to tender, so if all goes well, we hope the work may start later this summer.

Pat Chalmers

On behalf of the Reach Development Group

Church Services



Scan the QR code to go to our website for more details and links to book for services in church buildings and to join in via Zoom and Facebook

<https://stmarysburwell.org.uk>

www.facebook.com/stmarysburwell

REGULAR PATTERN OF SUNDAY SERVICES IN BURWELL AND REACH

June and July 2021

St Mary's, Burwell

Every Sunday 10.00am Morning Service, usually Holy Communion

St Etheldreda's, Reach

1st & 3rd Sunday 9.00am Holy Communion Service

MIDWEEK SERVICES

Please check for up to date information each week on our website and Facebook

SOME ONLINE SERVICES continue on Facebook and Zoom

CHURCH BUILDINGS OPEN FOR INDIVIDUAL PRAYER

Days and times will vary depending on when services are scheduled

St Etheldreda's is usually open on Thursdays and some Sunday afternoons

PHONELINE 01638 598958 - dial in to hear a recording of our Facebook Services

Know Your Parish Council

Your councillors are:

Charlotte Cane	Chair	741064
Nick Acklam	Vice Chair	743749
Cristine Fletcher	Councillor	07763 529886
David McMillan	Councillor	741259
Andrew Trump	Councillor	07980 955490
Hannah Web	Councillor	
Vacancy	Councillor	

Charlotte Cane	District Councillor
John Trapp	District Councillor
Joshua Schumann	County Councillor

Your Clerk is Susan Bailey
29 Great Lane Reach CB25 0JF; 01638 743794
clerk@reachparishcouncil.org

Meetings take place, normally in the Village Hall (with alternative arrangements when Covid-19 restrictions are in place), on the first Wednesday of each month. They start at 7.45pm and all Reach villagers are welcome to be involved.



VISUAL | DIGITAL | PERFORMING ARTS

CCA offers part-time creative courses for adults 19+ across Cambridgeshire, both online and face to face, including informal 8 week and accredited year-long options



"I have developed new techniques and confidence to try things and fallen in love with art again"

Find out more & sign up to our mailing list

www.camcommarts.org.uk

Know Your District Councillors



At the Annual Council meeting, appointments on committees for the next year were confirmed. Alan Sharp was elected Chair and Dan Schumann Vice-chair, of Council. Charlotte and John remain on the Finance & Assets committee; Charlotte is a member of the newly formed Audit Committee and the Bus Working Group. John remains on the Planning Committee and he is a new appointee on the Operational Services committee.

The government is not allowing English Councils to continue remote meetings, so we are returning to face-to-face meetings. Officers are currently looking at how to do this safely and it may be that some meetings are not held at the Council Offices because a larger venue is needed. Virtual meetings have had their challenges, but the great advantage was that many more residents were able to engage with debates than happens with face-to-face. The Government is consulting on allowing remote meetings, if you would like to express your views, the consultation is open until 17th June at - <https://www.gov.uk/government/consultations/local-authority-remote-meetings-call-for-evidence>

The Council has decided to demolish the buildings, including the tent, at the Mepal Outdoor Centre. John and Charlotte, amongst others, were shocked that the buildings had been allowed to fall into such disrepair and that insurance money received had not been spent on repairing the buildings. There was no consideration given to alternative options other than to keep the buildings in their current state. Nor was there any consideration of the impact of demolition on the wildlife at the site and how to mitigate disturbance. An application to demolish will now be made through the planning system. This was particularly ironic, as the Operational Services Committee earlier in the month had approved a Youth Strategy and Action Plan.

One of the big concerns which came from the Youth survey was space for recreation and outdoor activities. It was unanimously agreed to carry over funds which would have gone to community sports centres in 2020-21 in order to provide financial assistance as they come out of Covid restrictions. It was also unanimously agreed to allocate CIL funding to improvements at the Gardiner Memorial Hall in Burwell.

The Council agreed to lend £390,000 to the East Cambs Community Land Trust (CLT) to allow them to buy and then sell shared ownership housing on the former MOD site at Ely. We were concerned about the terms on which the CLT would be offering these so-called affordable houses, because the houses would be sold at full market value, even though the CLT was buying them at a discount from the East Cambs Trading Company. The only affordable element was that the new owners would only part own the properties, with the CLT owning the rest; there would be rent paid on the non-owned share, as well as possible service charges, so we questioned whether there would be any saving for the owners after paying the extra charges. We were also concerned about the security of the loan, as with the other lender the total loans would be 114% of the value of the CLT's share of the equity, against which the loans are secured.

East Cambs CLT's only members are the 5 Trustees, 2 of whom are District Councillors, appointed by the District Council. One of these appointments is also Leader of the District Council and sits as an Observer on the Board of the East Cambs Trading Company and she is a member of the Combined Authority. The role of Observer is not limited to observing at the meetings – they speak at the meetings and steer matters, such as how the Business Plan should be presented. So, this Councillor leads the District Council which lent over £1m to the Trading Company to develop the MOD site, is a member of the Combined Authority which lent several million pounds to the Trading Company to develop the MOD site, attends Board meetings of the Trading Company, which sold the houses at a discount to the CLT, is a Trustee of the CLT which is buying the houses at a discount but selling them on at full market value and leads the District Council which is lending the CLT some of the money with which to buy the houses. As your District Councillors, we are deeply concerned about the accountability and transparency of these arrangements.

Our next Councillors' Surgery and meet your Councillors will be on Wednesday 23 June at 6.30pm. This will be held by zoom - Meeting ID: 865 7631 8040, Passcode: 490667. If you prefer to join by 'phone, the number is 01314 601196. The same details can be used for our Councillors' Surgery on Wednesday 21 July at 6.30pm.

Charlotte Cane

charlotte.cane@eastcambs.gov.uk 01638 741064

John Trapp

john.trapp@eastcambs.gov.uk 01223 812120

Reach Cricket Team 2021



**Sunday 25 April
Cambridge Kerala (246-9) beat Reach (115 all out)
by 131 runs**

The season began with a familiar story: a team getting away from us. Never mind three wickets from Rob Steed and a run out by Andrew Trump, returning after a season in the wilderness, Kerala notched up 246 runs for 9 in only 35 overs. It was too much, as Reach's flailing bats provided one catch after another for Kerala's keeper, Saheer Babu. We came to grief on 115 after 23 overs. It was Babu's game, with 43 runs, five catches and a run out to boot.

**Sunday 2 May
Ivanhoe (140 – 9) beat Reach (139 all out)
by 1 wicket**

There are cricket games which are forgotten before the next weekend and cricket games which will live on in the memory, passed down through the generations, the legend growing which each re-telling. Our clash with Ivanhoe was the latter – although not in my memory, obviously, because I wasn't there. But oh, how I wish I had been. Except if I had been there, then maybe we wouldn't have got to 139 – not with one more fat zero in the scorebook. The runs came mainly from the middle order: Chris Bridgeman 31, Will Day 30, Mark Estall 25. But how expensive would those odd opportunities for an extra run turn out to be? The answer came in the twilight, as Ivanhoe's 35 overs drew to a close, after Hector Keutgen and Will Day had each taken three victims and just one flimsy wicket stood between Reach and glory. Could we get that wicket? No, Ivanhoe sneaked over the line on the very last ball.

In decades to come I'm sure I will be sitting in a corner of the Dyke's End, regaling the story of how, in the golden spring of 2021, we fell at the last – even though, as I have said, I wasn't actually there and I can't even tell you how Ivanhoe scored their winning run.

Sunday 9 May

Milton (191-9) beat Reach (147 all out) by 44 runs

I was back, though, to face Milton in our third game of the season. And this time I really did contribute a big fat zero to the score book. But that was still to come when a might Milton XI notched up 191 runs in 40 overs, not even Tony Fordham's three for 36 standing in their way. The game was not beyond us. But we never kept quite on the pace. When Tim Davies came into bat, the boundary seemed to come in a few yards as he pummelled a quick 30, but it was not to be our day as we perished 44 runs adrift.

Sunday 16 May

Reach (160-7) beat Chippenham (114 all out) by 46 runs

If there was even a game destined to be rained off, this was it. With Michael Mead's rainfall app predicting that large splodges of blue would soon be engulfing us from the south west, the game was shortened to 30 overs per side, in the hope of giving us a little time to brave out the rain breaks. But they were rain breaks that never came. From humble beginnings our innings grew and grew. We could have been stopped had Chippenham put one or two more youthful fielders in positions to counter Rob Steed's leg-side nibbles. Instead, he reached 45 by the end of our 30 overs. With 43 from Tim Davies, too, we had set a competitive 160. Chippenham let it be known that their's was more a batting XI. But what is a batting XI when pitched against Hector Keutgen, who took four wickets for nine runs. The clouds parted and the visitors crumbled, dismissed for 114 to give us our first victory of the season. The only tragedy is that Hector's day job is playing for Chippenham's Saturday league side. The poor lad now faces revenge from his team mates for having treated them so savagely.

Ross Clark

Reach Riders

The Reach Riders group is growing - we now have 25 members.

A full safety check was undertaken by the committee recently and the fencing has been secured and we have a working group planned for bank holiday Monday to paint and creosote some jumps.

Lessons continue on a Saturday afternoon with Lucy Tuck. We are now hoping, with restrictions lifting, to have some fund raising and social events in the near future. Watch this space!

Sue Cameron

Fixtures 2021

Sun 25 Apr	Home start 1.30pm Kerala - LOST by 131 runs
Sun 2 May	Home start 1.30pm Ivanhoe - LOST by 1 wicket
Sun 9 May	Home start 2.00pm Milton - LOST by 44 runs
Sun 16 May	Home start 1.30pm Chippenham - WON by 46 runs
Sun 23 May	Home start 2.00pm The Journeymen – WON by 3 wickets
Sun 30 May	Away start 1.30pm Barrow – LOST by 58 runs
Sun 6 Jun	Away start 1.30pm Fen Ditton
Sun 13 Jun	Away start 1.30pm Guilden Morden Cherubs
Sun 20 Jun	Home start 1.30pm Pimlico Strollers
Sun 27 Jun	Home start 1.30pm Extras CC
Sun 4 Jul	Home start 1.30pm Kirtling
Sun 11 Jul	Home start Midday Space Cadets
Sun 18 Jul	Away start 1.30pm Woodford Green
Sun 25 Jul	Away start 1.30pm Stansfield
Sun 1 Aug	Home start 2.00pm Rain Men
Sun 8 Aug	Home start 2.00pm Chinar CC
Sun 15 Aug	Home start 1.30pm Waterbeach
Sun 22 Aug	Home start 1.30pm Sharks CC
Sun 29 Aug	Away start 1.30pm Milton 1.30
Sat 4 and Sun 5 Sep	Monmouth tour
Sun 12 Sep	Home start 1.00pm Stansfield
Sun 19 Sep	Home start 1.30pm Teluga Association Cambridge
Sun 26 Sep	Home start 1.00pm Phoenix CC

Parish Council Meeting Minutes

Minutes of Reach Parish Council meeting held via Zoom on; Wednesday 7th April 2021

Attendance

Charlotte Cane	Acting Chair	Present
Andrew Trump	Councillor	Present
David McMillan	Councillor	Present
Cris Fletcher	Councillor	Present
Nick Acklam	Councillor	Present
Hannah Webb	Councillor	Present
Susan Bailey	Clerk	Present
Charlotte Cane	District Councillor	Present
Joshua Schumann	County Councillor	Not Present

Apologies for absence

There were none.

Forum for members of the public.

A member of the public joined the meeting to hear the Tennis Court discussion.

1. Declaration of Interests

There were none.

Lucy Frazer MP

The PC had told Lucy Frazer that they were interested in discussing the NP and the planning reform White Paper and the approach to cumulative solar farm planning applications. She, therefore, started the discussion with a short introduction explaining that the aim of the White Paper was to streamline the planning procedure, as a quicker system was required to get housing built. The Government was reviewing its proposed reforms in light of the substantial public response to the consultation. Lucy Frazer had spoken to Christopher Pincher, Minister of State for Housing before the meeting to establish his view. He assured her that he saw the NP as an integral part of the planning system. Lucy Frazer also stated that the new approach to planning would make it easier for Local Authorities to plan for the cumulative effects for infrastructure.

Councillor Acklam reiterated that, in current form, the White Paper's proposals would diminish the impact of NPs and with it the improvements in local democracy provided through the Localism Act of 2011. Furthermore, there was no evidence yet, that the planning reforms would deliver the required overview of solar farm applications in our locality. Lucy Frazer reiterated the point that the Minister recognises the value of the NP and that the Government is concerned about the thoughts of local people. She spoke of her opposition to the Sunnica application and how it was bigger than all the others put together.

Councillor McMillan queried that the white paper does nothing to consider the process of 'land banking' or encourage approved applications to be built.

Lucy Frazer thought there had been a Government report into the time taken to build and how long permissions should last. She will report back to the PC. She believes that if the process can be sped up, there will be less 'land banking' and houses will be built quicker.

Councillor Trump introduced the AtoB1102 group to Lucy and asked for her support. She had no knowledge of the group but was keen to hear about it and to support them. She stated that an increase in building increases funds for infrastructure and this also works in reverse, better infrastructure will increase planning applications from developers. Councillor Cane stated that it was hard to make a financial case for transport in rural areas, ECDC had been told that bus services must become self-funding. Lucy Frazer reminded Councillors that the Mayor has an amount of money for local infrastructure. She had also recommended Burwell to Reach in the cycle path bidding. Councillor Cane confirmed that this was the last bid on the list.

2. Councillors – Election of Chair. Recruitment of new councilors

There were no volunteers or nominations for the position of Chair of the PC.

3. Planning Applications.

21/00374/RMA Land Off Clunch Pit Lane Fair Green, Reserved matters of Appearance, Landscaping, Layout and Scale of previously approved 18/01397/OUT for demolition of existing agricultural buildings, construction of two detached bungalows, associated parking & infrastructure.

The PC does not object to this application but is concerned about the specific positioning of one of the bungalows (plot 2). A comparison of the block plans for 18/01397/OUT and 21/00374/RMA shows that that this element of the proposed development has been re-orientated and moved to the NW of the site.

Our concerns are detailed in the attached pro-forma of material planning considerations relating to this application but, in summary, they are:

- this property would be 10m closer to the property line with 5 Great Lane. This, in addition to the fall of the land on the site would give rise to overlooking and privacy issues for the neighbouring property
- the minutes of the ECDC Planning Committee meeting of 3 April 2019 state that outline planning permission was given on the basis of the site being brownfield. This is quite palpably not the case. About one third of the site is greenfield. However as laid out in the block plan for 18/01397/OUT (on which the Planning Committee based its decision), only a small proportion of the build of plot 2 extended onto the greenfield element of the site. In the block plan of the current application, approximately three quarters of the build of plot 2 would be on the greenfield site. The approval of this revised layout would run contrary to the spirit of the outline planning approval.
- the property would come very close (estimate to within about 4m) of the overhead power cabling serving the village.
- the views of the Conservation Officer regarding the orientation of plot 2 which align with section 3.1 of the Reach Design Code.

The PC would wish to see a detailed proposal for upgrading vehicular access to the site agreed & implemented before construction work begins on site.

Planning Discussion Document.

Discussion with applicant/site visit 24 March 2021 Applicant, Cris Fletcher, Nick Acklam and Charlotte Cane

Meeting 4 April 2021 Neighbouring property 5 Great Lane, Neighbour, Nick Acklam and Charlotte Cane

Local Plan The site lies just outside the development envelope of the village as defined by the East Cambridgeshire Local Plan 2015.

Previous applications/appeals Outline approval was given for the demolition of existing agricultural buildings, construction of two detached bungalows associated parking and infrastructure in April 2019 (18/01397/OUT).

Loss of sunlight See section 7. If trees were planted or a standard size fence erected along or close to the boundary with 5 Great Lane, there would be significant loss of sunlight to the back garden of 5 Great Lane which is significantly lower than the applicant's land. We ask that should approval be granted conditions will be added to prevent additions which would restrict sunlight in the garden of 5 Great Lane.

Overshadowing/loss of outlook as a single storey development, the proposal will not be visible from Fair Green nor will it significantly affect the outlook of existing houses in the village with the exception of 5 Great Lane see section 7

Overlooking and loss of privacy The block plan reveals that the applicant proposes to move the second bungalow plot 2 some distance to the north west within the site. This brings the proposed development closer to the property line with 5 Great Lane. This in combination with the fall of the land, also in a north-westerly direction creates overlooking and privacy issues. For example, the 1st floor bedroom window of 5 Great Lane is roughly at ground level with the applicant's field. The relocation takes the second bungalow approximately 7m into the greenfield element of the site. We note that the Planning Committee meeting of 3 April 2019 approved outline development of the site on the basis that it was a brownfield site. The block plan of the outline application on which the Committee will have based its decision shows that originally both bungalows were located entirely within the brownfield element of the site.

Highway issues: Traffic generation, Vehicular access, Highway safety Some clarification is required of when and how the byway providing vehicular access to Fair Green will be surfaced. There is also a need to evaluate the draining of the byway to ensure that runoff from the byway is captured and does not lead to surface water on Fair Green. We would like the details of this to be agreed before work starts on site, if approval is granted.

Noise or disturbance resulting from use, including proposed hours of operation N/A. However, we ask that should approval be granted, restrictions are placed on hours and days of construction in recognition of the proximity of the back gardens of neighbouring properties.

Smells and fumesN/A

Capacity of physical infrastructure We note that the re-positioned bungalow, Plot 2 in the proposal, now comes very close to the 110Kv overhead electricity cabling of the village. It may not meet UK power networks criteria.

Deficiencies in social facilities N/A

Storage and handling of hazardous materials and development of contaminated land We note previous requirements placed on the developer to test for and safely remove contaminated material from the brownfield element of the site. We request that contaminated land conditions 1 and 4 are attached to any planning permission granted.

Loss or effect on trees We note that mature trees on site will not be affected by the development and that significant new planting of shrubs hedging and trees, some of it native, is proposed. We would like these proposals included as conditions should approval be granted.

Adverse impact on nature conservation interests and biodiversity opportunities N/A

Effect on listed buildings and conservation areas N/A

Incompatible or unacceptable uses N/A

Local financial considerations offered as a contribution or grant N/A

Compliance with Reach Design Code The submission is generally compliant. The proposed design of the bungalows in clay tile and black horizontal cladding, whilst not strictly vernacular, is low key and will not stand out from the building mix of the village. At present we do not seem to have details of wastewater or rainwater management nor of installation of solar panels. We would urge the applicant to adopt the recommendations of the design code in these areas. We consider that the Conservation Officer's concern about the novel orientation of plot 2 is supported by section 3.1 of the Reach Design Code "The placement and orientation of buildings should form an identifiable building line for each development group".

Compliance with Reach Landscape Analysis The submission is generally compliant. The site lies within landscape area 3 of the Reach landscape appraisal, which in relation to sensitivity and capacity for development states 'land behind the existing development in the village may have some capacity for small scale 1-2 bespoke dwellings accessed via a single private track. Development should reflect the more agricultural character of built form behind the main street, and larger scale housing extending onto the clunch pits should be avoided, as it would adversely affect the strong settlement character and form. It will be important to ensure that new rooflines do not appear above the existing properties on Fair Green and do not adversely affect the setting of listed buildings or the Conservation Area'.

Conclusion of outcome: No objection, but submit comments

Do the Parish Council ask for application to be called in to Planning Committee if Planning Officer is minded to Approve?
YES

Which Councillors would be suitable to represent the Parish Council at Planning Committee if required? Nick Acklam

21/00405/FUL Weirs Farm Burwell Road Reach. Erection of agricultural building for storage of straw & agricultural machinery.

Planning Discussion Document

Discussion with applicant/site visit Nick Acklam and Charlotte Cane & applicant

Local Plan Outside the development envelope on open farmland

Previous applications/appeals Various for agricultural buildings since 1991, all permitted. 5 bed bungalow in 1991 permitted. 2 bed bungalow in 2006 refused.

Loss of sunlight None

Overshadowing/loss of outlook No residential property or public access nearby

Overlooking and loss of privacy No residential property or public access nearby

Highway issues: Traffic generation, Vehicular access, Highway safety No additional traffic movements except during construction.

Noise or disturbance resulting from use, including proposed hours of operation Open barn for storage of produce and machinery so no noise or disturbance

Smells and fumes None

Capacity of physical infrastructure N/A

Deficiencies in social facilities N/A

Storage and handling of hazardous materials and development of contaminated land None

Loss or effect on trees No trees on or near site

Adverse impact on nature conservation interests and biodiversity opportunities On farmland next to two existing identical barns with limited foundations – no additional lighting or anything else to disturb wildlife.

Effect on listed buildings and conservation areas None

Incompatible or unacceptable uses N/A

Local financial considerations offered as a contribution or grant N/A

Compliance with Reach Design Code N/A

Compliance with Reach Landscape Analysis Farm building next to other farm buildings in open landscape but with little or no visibility from roads or pathways.

Conclusion of outcome: Fully support

If permission is granted, the PC should like a condition added that the colours should be similar to the existing barns - i.e., neutral rustic colours.

4. County Councillor Report

No report received.

5. District Councillor Report

Finance and Assets Committee held 2 meetings in March, because there was too much business for one meeting. In an attempt to address this in the future, some responsibilities have been moved to the Operational Services Committee and a new Audit Committee has been set up, but that is not due to meet until July.

It was agreed that the buildings, including the tent, at the Mepal Outdoor Centre should be demolished. John and Charlotte, amongst others, were shocked that the buildings had been allowed to fall into such disrepair and that insurance money received had not been spent on repairing the buildings. There was no consideration given to alternative options other than to keep the buildings in their current, deteriorating, state. Nor was there any consideration of the impact of demolition on the wildlife at the site and how to mitigate disturbance. An application to demolish will now be made through the planning system.

It was unanimously agreed to carry over funds which would have gone to community sports centres in 2020-21 in order to provide financial assistance as they come out of Covid restrictions. It was also unanimously agreed to allocate CIL funding to improvements at the Gardiner Memorial Hall in Burwell.

The Business Plan for East Cambs Trading Ltd for 2021-22 was approved, despite several members expressing concern about some aspects. These concerns included that the plan shows a loss of £455k to add to the forecast loss for 2020-21 of £544k. Indeed, the company has reported losses in every year apart from 2018-19, when it reported a profit of £664k. It is forecasting a profit of £1.8m in 2022-23. The Balance Sheet and Cash Flow are Exempt items which cannot be publicly discussed. The published accounts for the year ended 31 March 2020 showed the company had Net Liabilities of £572k, with the forecast deficits for 2020-21 and 2021-22 the Net Liabilities at 31 March 2022 would be £1.6m. The Cash at Bank at 31 March 2020 was £89k. On 31 March 2021 the company repaid £5.5m of loans to East Cambs DC but took out a further £4.9m in loans from East Cambs DC. East Cambs DC has no security against these loans, unlike the Combined Authority which has a charge against the company's assets for its loans to the company. The Internal Audit Plan for 2021-22 was approved, subject to review by the newly established Audit Committee at its first meeting. The progress on the plan for 2020-21 was noted with some concern as several reviews have not yet been completed. We were assured that all reviews would be completed and reported to the first meeting of the Audit Committee. The Risk Register was also noted, again with concerns that it was not adequately identifying risks and detailing appropriate actions to reduce those risks.

Operational Services Committee approved the Business Plan for 2021-22 for East Cambs Street Scene. They approved a Youth Strategy and Action Plan. Ironically, given F&A's decision to demolish the structures at Mepal Outdoor Centre, a big concern which came from the Youth survey was space for recreation and outdoor activities.

The Council Meeting on 15 April was cancelled without consultation, due to a lack of business. But shortly after this, the Council's Annual Meeting planned for 20 May was moved to 22 April. Again, this was moved without consultation, in order to hold the Annual Meeting under the current rules allowing on-line meetings. The government have refused all-party requests from the Local Government Association and the National Association of Local Councils to extend the current arrangements beyond early May. Councils are therefore faced with bringing meetings forward or making arrangements to hold Covid safe meetings. East Cambs DC meetings have seen hundreds of people logging on during and after meetings to view on-line proceedings. This is much higher numbers than can attend meetings in person. Journeys to and from Ely for meetings have been cut, saving the Council money and saving environmental degradation. We are therefore pleased that the government is consulting on allowing on-line meetings and we hope they will reconsider. The consultation is now online at <https://www.gov.uk/government/consultations/local-authority-remote-meetings-call-for-evidence>.

Bin collections this week and after the two May Bank Holidays will be one day after the normal collection day.

6. Minutes of previous Meeting

Approved as correct.

7.1 Reach Grant Fund

Nothing to report.

7.2 Finance

Nothing to report. It was noted that as we approach the Year End the PC had managed to operate close to budget.

7.3 Parish Council Members

Residents had asked the Clerk about the granting of a wayleave to allow fibre broadband to be laid under the pub driveway. **Councillor Cane** to chase up a response from the company and **Councillor Cane & Clerk** to sign the wayleave on receipt of an acceptable response regarding the terms.

7.4 Play Spaces

Councillor McMillan had tightened some of the loose fixings on the climbing frames and zip wire. **Clerk** to try and get more quotes for the painting of the swings, and repair of the bus shelter.

7.5 Rights of Way

Nothing to report.

7.6 24Acres Committee

Nothing to report.

7.7 Neighbourhood Plan

Meetings and engagement with the village

There were no public meetings in March.

Ecological Appraisal

The Group amended and approved the appraisal from MKA Ecology. The appraisal demonstrates that, despite its small size, the parish of Reach has an extraordinarily diverse and valuable ecology. The appraisal has now been posted on the Neighbourhood Plan webpage and is reflected in the finalised draft Plan.

Draft Plan

It has taken longer than anticipated to finalise the draft Plan, but we were determined to get it right (particularly in ensuring our evidence-base is comprehensive) rather than rushing the exercise. The draft is now available for colleagues to read before the PC meeting.

When compared to many Neighbourhood Plans, ours is relatively simple. We are a very small neighbourhood, the practical and physical constraints to development are significant and there is a strong and clear consensus within Reach about how the village should evolve. Our plan therefore focuses on policies to enable modest housing growth at locations which minimise the adverse impacts of development, to protect the village's distinct sense of place and significant archaeological and ecological assets. It identifies challenges (without prescribing solutions) which the village will need to address over the next few years, notably the extent to which we wish to promote Reach as a recreational destination and the associated issue of car parking.

The plan also offers a range of practical projects for improving our environment which the village can develop as we return to something like normality.

The PC is invited to approve the draft Plan for consultation in accordance with regulation 14 of Neighbourhood Planning regulations and to delegate to Councillors Cane and Acklam the power to approve minor technical, grammatical, and factual amendments to the Plan. APPROVED

Next steps

The Government's current timetable for easing coronavirus restrictions rules out our preference for engaging with residents face-to-face about the draft Plan - given the time limitations of the funding available to us and our desire to take the Plan to referendum before any changes are made to UK planning legislation.

If the PC approves the draft, it will be published on the Neighbourhood Plan webpage and printed copies of the draft along with a short summary of its key proposals and a comments form will be delivered to every house in the village and villagers will be encouraged to comment. In a bid to mitigate the enforced lack of face-to-face-engagement, we will hold drop-in sessions probably online, but we might try something on the Green, so that we can take ideas and answer questions.

Funding

Concurrence is sought for the payment of two invoices.

£3240 (including VAT) from MKA Ecology for production of the ecological appraisal

£6531.84 (including VAT) from Ian Poole for his continuing support in production of the Plan.

The business cases for both sums have been approved by Locality, the central Government agency responsible for funding neighbourhood plans. The funding is available in the Reach PC account.

The PC is invited to approve payment of the two invoices. APPROVED.

The Project Group has not spent its FY20/21 allocation from Locality and will be obliged to return around £2500 and to bid again for FY 21/22 funding to complete the Plan. Cllr Acklam and the Clerk needed to reconcile the NP accounts to clarify the exact figure and repay promptly. Cllr Acklam asked the Council to approve repaying up to £2500 once the NP accounts had been clarified. APPROVED

Outlook

We remain cautiously optimistic about being able to put a finalised Plan to the village for endorsement (or otherwise) in a referendum later this year.

7.8 Friends of Reach Wood

Nothing to report.

7.9 AtoB1102 Group

No report supplied.

8. Swings & bus shelter repairs.

Although the Clerk had managed to get 2 contractors to look at the work only one quote had been received.

Clerk to try and get 3 quotes for the next meeting. **Councillor Cane** to ask, on Facebook, for anyone interested to contact the Clerk.

9. Tennis Court maintenance.

David Parr had obtained quotes for the works required and the PC agreed to Approve the preferred quote. **David Parr** to arrange for the work to be done.

David Parr to take on the role of seeking new members & getting the revenue in to build up the fund again. Once the work is complete, pictures will be taken and advertised in the Crier (Swaffham Prior wanted their own court a couple of years ago so there is an interest). It will be a proactive approach and people will be re-contacted after 12 months - we can then move onto Bulbeck and Burwell if necessary.

It was agreed that the Grant fund would give £200 per year to the Tennis fund in readiness to be called upon after 10 years. If a larger sum is needed external grants would need to be applied for but the village could significantly contribute which always makes grants a little easier to come by.

The PC would like to restore the tennis committee, this will be attempted via the magazine and Facebook.

10. Safeguarding Policy & designated Safeguarding officer

The PC approved the adoption of the ECDC Safeguarding Policy. Clerk to become Safeguarding officer. **Councillor Cane** to enquire at ECDC about appropriate training.

11. May PC meeting, Annual Parish Meeting and in person PC meetings going forward – changes to Standing Orders.

As this is an election year the May meeting would normally be moved. The PC agreed for the meeting to be brought forward to Wednesday 28th April. This will be the Annual Parish Meeting.

Government policy is now for all PC meeting to be held in person as of the 7th May. This will involve much Covid procedure which could be difficult to achieve. Therefore, the June meeting will only take place to approve payments and for any planning discussions. Once the Covid protocol has been dropped at the end of June the PC meeting will resume in the village Hall on the first Wednesday of the month.

To allow for these changes the PPC approve a change to the Standing Orders to state –

The Council shall hold the annual parish meeting on such day between 1 March and 1 June, both inclusive, as the Council may direct, unless it decides not to hold the annual parish meeting due to circumstances in any particular year.

12. Reach NP - Approval of draft Plan and next steps

Approved – see report above.

Councillor Acklam stated that the need to return unspent Central Government funding for FY 20/21 and to bid again for funding in FY 21/22 to complete the NP could well delay the project as the NP Group would be unable commit, in the short term, to activity for which no funding was currently available. A loss of project momentum at this point would be problematic. He mentioned, in particular, the costs of printing the draft Plan for distribution to every home in the village. This was a really important element of keeping residents engaged given the uncertainties of face-to-face meetings. Funding for printing had been approved by Central Government in our FY20/21 bid and was part of the unspent monies being returned. Whilst there was no guarantee that our bid for funding in FY21/22 would be successful, there was nothing to suggest otherwise. However, the Central Government NP Grant Fund for FY 21/22 had not yet opened and might then take several weeks to process. Councillor Acklam therefore asked that the PC underwrite the costs of printing amounting to around £575. APPROVED

13. Village Hall Caretaker.

Graham Radford had given notice of his intension to retire from the Village Hall committee. The Committee are looking at ways to cover the work that he did and asked the PC if they were willing and able to subcontract the Clerk to do the admin work. This would remove the requirement for the Village Hall to become an employer which would result in more work. Approved. **Councillor Trump** to report back to the Village Hall Committee for further discussion.

14. Information Items

There were none.

15. Payments

E. on - Power on the green	£17.13
People4Places – Neighbourhood plan	£6531.84
MKA Ecology – Neighbourhood plan	£2340.00
CAPALC – membership	£268.72
S Bailey – Clerk Salary	£1479.52
S Bailey – postage	£18.57
Reach Village Hall - storage	£720.00
CR Contracting – mowing	£96.50

DRAFT Minutes of Reach Parish Council meeting held via Zoom on; Wednesday 28th April 2021

Attendance

Charlotte Cane	Councillor	Present
Andrew Trump	Councillor	Present
David McMillan	Councillor	Present
Cris Fletcher	Councillor	Present
Nick Acklam	Councillor	Present
Hannah Webb	Councillor	Present
Susan Bailey	Clerk	Present
Charlotte Cane	District Councillor	Present
Joshua Schumann	County Councillor	Not Present

Apologies for absence

There were none.

1. Election of Officers; Chairman, and Vice Chairman.

Councillor Acklam nominated Councillor Cane as Chair. Councillor McMillan seconded. APPROVED
Councillor Cane nominated Councillor Acklam as Vice Chair. Councillor McMillan seconded. APPROVED

2. Declaration of Interests

There were none.

3. Minutes of previous Meeting

Approved as correct.

4. Election of additional officers, Rights of Way & Play Spaces, any additional officers

Alex de Giorgio-Miller agreed to continue as Play spaces officer, **Clerk** to ask Hilary Fielding to be Rights of Way Officer.
Councillor Acklam agreed to continue as Trees officer.

5. Information Items

It has been ruled that all PC meeting after 6th May must be held in person. Whilst Covid restrictions are in place the PC will meet only for urgent business that of planning, approval of minutes and payments. These meetings will be held at 6pm at the picnic area.

It is anticipated that after June 21st Covid restrictions will be fully removed and PC meeting will revert to full meetings held in the Village Hall.

6. Payments

E. on - Power on the green	£13.61
CR Contracting – mowing	£276.50
Groundworks – NP unused grant repayment	£1,493.80

The date of the next Parish Council meeting will be a brief meeting, held on Wednesday 2nd June 2021 at 6pm.
The Agendas for this meeting will be issued by the previous Wednesday and can be accessed from the Parish Council area of the Reach website (www.reach-village.co.uk).

Diary Dates

June	Event	Location	Time
Wednesday 2	Parish Council Meeting	Virtual Meeting	7.45pm
Friday 4	Recycling Day (Blue)		
Thursday 10	Recycling Day (Green)		
Thursday 17	Recycling Day (Blue)		
Thursday 24	Recycling Day (Green)		

July	Event	Location	Time
Thursday 1	Recycling Day (Blue)		
Wednesday 7	Parish Council Meeting	Village Hall (subject to June 21 st government announcements)	7.45pm
Thursday 8	Recycling Day (Green)		
Thursday 15	Recycling Day (Blue)		
Thursday 22	Recycling Day (Green)		
Thursday 29	Recycling Day (Blue)		



Bus Timetable

Reach is served by the Stagecoach number 11 bus service - summary of all buses serving Reach is shown below.

Please note that there is no bus service at all on Sundays

Cambridge to Bury - Monday to Friday (excluding Bank Holidays)				
Cambridge Drummer Street	Reach	Burwell Ness Road	Newmarket Bus Station	Bury Bus Station
06:50	07:28	07:36	08:08*	08:49
07:50	08:28	08:36	09:08*	09:49
09:50	10:28	10:36	11:08*	11:49
11:50	12:28	12:36	13:08*	13:49
13:50	14:28	14:36	15:24*	15:49
15:50	16:28	16:36	17:30	17:55
18:15	18:53	19:06		
19:15	19:53	20:06		

Cambridge to Bury - Saturdays (excluding Bank Holidays)				
Cambridge Drummer Street	Reach	Burwell Ness Road	Newmarket Bus Station	Bury Bus Station
06:50	07:28	07:36	08:08*	08:49
07:50	08:28	08:36	09:08*	09:49
09:50	10:28	10:36	11:08*	11:49
11:50	12:28	12:36	13:08*	13:49
13:50	14:28	14:36	15:08*	15:49
15:50	16:28	16:36	17:08	17:55
18:15	18:53	19:01		
19:15	19:53	20:03		

Bury to Cambridge - Monday to Friday (excluding Bank Holidays)				
Bury Bus Station	Newmarket Bus Station	Burwell Ness Road	Reach	Cambridge Drummer Street
		06:19	06:33	07:12
		06:39	06:53	07:32
	08:40	09:06	09:20	09:59
10:05	10:35*	11:06	11:20	11:59
12:05	12:35*	13:06	13:20	13:59
14:05	14:35*	15:06	15:20	14:59
15:05	15:35*	16:06	16:20	15:59
16:05	16:35*	17:06	17:20	16:59
17:05	17:35*	18:06	18:20	17:59

Bury to Cambridge - Saturdays (excluding Bank Holidays)				
Bury Bus Station	Newmarket Bus Station	Burwell Ness Road	Reach	Cambridge Drummer Street
		06:19	06:33	07:12
		06:49	07:03	07:42
	08:40	09:06	09:20	09:59
10:05	10:40*	11:06	11:20	11:59
12:05	12:40*	13:06	13:20	13:59
14:05	14:40*	15:06	15:20	15:59
15:05	15:40*	16:06	16:20	16:59
16:05	16:40*	17:06	17:20	17:59
17:05	17:40*	18:06	18:20	18:59

* These are departure times - buses will arrive approximately 5 minutes earlier

A full timetable can be downloaded from www.reach-village.co.uk/bus_service.html

Then and Now *(see opposite page for pictures)*

These photos which I believe were taken in the early 1990's show the West side of Reach Lode just beyond the 'gault pit' at a time when extensive landscaping of that area took place. I am guessing the date somewhat, but my son (born 1983) is in one of the photos and looks to be no older than 10 at the time. Looking towards the village, adjacent to the tree which stands there today, a temporary bridge was built across the Lode to enable heavy plant to access the area. The clunch barn at Hurdle Hall can be seen, alas to have disappeared some years later.

Chris Patterson

Contact Information

Parish Council – see “Know Your Parish Council”		
Village Hall		
Chair	Grahame Radford	01638 742814
Finance	Andrew Trump	01638 743335
Bookings	Grahame Radford	01638 742814
Marquee Bookings	Andrew Hall	01638 743737
Church		
Vicar	Eleanor Williams	01638 741262
Curate (duty days Wed, Fri and Sun)	Reverend Paula Spalding	07545 868549
Priest in Retirement	Reverend David King	01638 742924
Churchwarden	Dr Stephen Martin	01638 611235
Churchwarden at Burwell/Reach	Sarah Wingate	01638 742498
Emergencies		
Electricity (Eastern Electric)		0800 783 8838
Police (Emergency/Non-Emergency)		999/101
Water (Anglian Water)		08457 145145
Doctors, Burwell		
Contact Phone Numbers		01638 741234, out of hours dial 111
Surgery Hours		Mon to Friday, 8.30am to 6.00pm
Website		https://www.theburwellsurgery.co.uk/index.aspx